

Product datasheet for PH323676

PLEKHO2 (NM_025201) Human Mass Spec Standard

Product data:

Product Type:	Mass Spec Standards
Description:	PLEKHO2 MS Standard C13 and N15-labeled recombinant protein (NP_079477)
Species:	Human
Expression Host:	HEK293
Expression cDNA Clone or AA Sequence:	RC223676
Predicted MW:	53.2 kDa
Protein Sequence:	>RC223676 representing NM_025201 Red=Cloning site Green=Tags(s)

MEEEGVKEAGEKPRGAQMVDKAGWIKKSSGGLLGFWKDRYLLLCQAQLLVYENEDDQKCVETVELGSYEK
CQDLRALLKRKHRFILLRSPGNKVSDIKFQAPTGEEKESWIKALNEGINRGKNKAFDEVKVDKSCALEHV
TRDRVRGGQRRRPPTRVHLKEVASAASDGLLRDLDPDPSGPPVFAPSNHVSEAQPRETTPRPLMPPTKPF
LAPETTSFGDRVETPVGERAPTPVSASSEVSPESQEDSETPAEEDSGSEQPPNSVLPDKLKVSWENPSPQ
EAPAAESAEPSQAPCSETSEAAPREGGKPPTPPKILSEKLGEMQASGPPAPGTVQVSVNGMDDSP
EPAKPSQAEGTPGTPPKDATTSTALPPWDLPPQFHPRCSSLGDLLGEGPRHPLQPRERLYRAQLEVKVAS
EQTEKLLNKVLGSEPAPVSAETLLSQAVEQLRQATQVLQEMRDLGELSQAAPGLREKRKELVTLYRRSAP

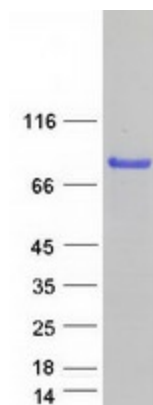
TRTRPLEQKLISEEDLAANDILDYKDDDDKV

Tag:	C-Myc/DDK
Purity:	> 80% as determined by SDS-PAGE and Coomassie blue staining
Concentration:	>0.05 µg/µL as determined by microplate BCA method
Labeling Method:	Labeled with [U- ¹³ C ₆ , ¹⁵ N ₄]-L-Arginine and [U- ¹³ C ₆ , ¹⁵ N ₂]-L-Lysine
Buffer:	25 mM Tris-HCl, 100 mM glycine, pH 7.3
Storage:	Store at -80°C. Avoid repeated freeze-thaw cycles.
Stability:	Stable for 3 months from receipt of products under proper storage and handling conditions.
RefSeq:	NP_079477
RefSeq Size:	3675
RefSeq ORF:	1470
Synonyms:	PLEKHQ1; PP1628; pp9099



[View online »](#)

Locus ID: 80301
UniProt ID: [Q8TD55](#)
Cytogenetics: 15q22.31
Protein Families: Druggable Genome
Protein Pathways: Cytokine-cytokine receptor interaction

Product images:

Coomassie blue staining of purified PLEKHO2 protein (Cat# [TP323676]). The protein was produced from HEK293T cells transfected with PLEKHO2 cDNA clone (Cat# [RC223676]) using MegaTran 2.0 (Cat# [TT210002]).