

Product datasheet for PH323658

Deoxyribonuclease I like 1 (DNASE1L1) (NM_001009934) Human Mass Spec Standard

Product data:

Product Type:	Mass Spec Standards
Description:	DNASE1L1 MS Standard C13 and N15-labeled recombinant protein (NP_001009934)
Species:	Human
Expression Host:	HEK293
Expression cDNA Clone or AA Sequence:	RC223658
Predicted MW:	33.9 kDa
Protein Sequence:	>RC223658 protein sequence Red=Cloning site Green=Tags(s)

MHYPTALLFLILANGAQAFRICAQAFNAQRLTLAKVAREQVMDTLVRILARCDIMVLQEVVDSSGSAIPLLL
RELNRFDGSGPYSTLSSPQLGRSTYMETYVYFYRSHKTQVLSSYVYNDEDDVFAREPFVAQFSLPSNVLP
SLVLPVPLHTTPKAVEKELNALYDFLEVSQHWQSKDVILLGDFNADCASLTKKRLDKLELRTEPGFHWI
ADGEDTTVRASTHCTYDRVVLHGRCRSLHTAAAFDFPTSFQLTEEEALNISDHYPEVELKLSQAHSV
QPLSLTVLLLLSLLSPQLCPAA

TRTRPLEQKLISEEDLAANDILDYKDDDDKV

Tag:	C-Myc/DDK
Purity:	> 80% as determined by SDS-PAGE and Coomassie blue staining
Concentration:	>0.05 µg/µL as determined by microplate BCA method
Labeling Method:	Labeled with [U- ¹³ C ₆ , ¹⁵ N ₄]-L-Arginine and [U- ¹³ C ₆ , ¹⁵ N ₂]-L-Lysine
Buffer:	25 mM Tris-HCl, 100 mM glycine, pH 7.3
Storage:	Store at -80°C. Avoid repeated freeze-thaw cycles.
Stability:	Stable for 3 months from receipt of products under proper storage and handling conditions.
RefSeq:	NP_001009934
RefSeq Size:	2665
RefSeq ORF:	906
Synonyms:	DNAS1L1; DNASEX; DNL1L; G4.8; XIB
Locus ID:	1774



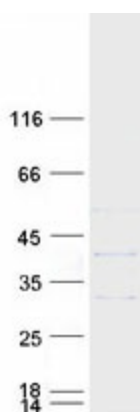
[View online »](#)

UniProt ID: [P49184](#)

Cytogenetics: Xq28

Summary: This gene encodes a deoxyribonuclease protein that shows high sequence similarity to DNase I. The encoded protein is localized to the endoplasmic reticulum and modified by N-linked glycosylation. Alternate transcriptional splice variants encoding the same protein have been observed. [provided by RefSeq, Jan 2015]

Product images:



Coomassie blue staining of purified DNASE1L1 protein (Cat# [TP323658]). The protein was produced from HEK293T cells transfected with DNASE1L1 cDNA clone (Cat# [RC223658]) using MegaTran 2.0 (Cat# [TT210002]).