

Product datasheet for PH323651

CLSTN1 (NM_001009566) Human Mass Spec Standard

Product data:

Product Type:	Mass Spec Standards
Description:	CLSTN1 MS Standard C13 and N15-labeled recombinant protein (NP_001009566)
Species:	Human
Expression Host:	HEK293
Expression cDNA Clone or AA Sequence:	RC223651
Predicted MW:	109.6 kDa
Protein Sequence:	>RC223651 representing NM_001009566 Red=Cloning site Green=Tags(s)

MLRRPAPALAPAARLLLAGLLCGGGVWAARVNHKHPWLEPTYHGIPTENDNTVLLDPPLIALDKDAPLRF
AESFEVTVTKEGEICGFKIHGQNPFDVAVVVDKSTGEGVIRSKEKLDCELQKDYSFTIQAYDCGKGPDT
NVKSKHATVHIQVNDVNEYAPVFKEKSYKATVIEGKQYDSILRVEAVDADCSPQFSQICSYEIITPDVP
FTVDKDGVIKNTKLNKGHEQYKLTVTAYDCGKKRATEDVLVKISIKPTCTPGWQGWNNRIEYEPGTGA
LAVFPNIHLETCDEPVASVQATVELETSHIGKGCARDTYSEKSLHRLCGAAAGTAELLSPSPGSLNWTMG
LPTDNGHDSQVFEFNGTQAVRIPDGVVSVSPKEPFTISVWMRHGPFGRKKETILCSSDKTDMNRHHYSL
YVHGCRILFLFRQDPSEEKRYRPAEFHWKLNQVCDEEWHHYVLNVEFPSVTLVYDGTSHPEFVSTEDYPL
HPSKIETQLVVGACWQEFSGVENDNETEPVTVASAGGDLHMTQFFRGNLAGLTLRSGKLADKKVIDCLYT
CKEGLDLQVLEDSGRGVQIQAHPSQLVLTLEGEDLGELDKAMQHISYLNRSRQFPTPGIRRLKITSTIKCF
NEATCISVPPVDGYVMVLQPEEPKISLSGVHFFARAASEFESSEGVFLFPELRIISTITREVEPEGDGA
DPTVQESLVSEEVHDLDTCEVTVEGEELNHEQESLEVDMARLQKQKIEVSSSELGMTFTGVDTMASYEE
VLHLLRYRNWHARSLDRKFKLICSELNGRYISNEFKVEVNVIIHTANPMEHANHMAAQPQFVHPEHRSFV
DLSGHNLANPHFVAVPSTATVVIIVCVSFLVFMIIILGVFRIRAAHRRMTMRDQDTGKENEMDWDSDALTI
TVNPMETYEDQHSSEEEEEEEEESEEDGEEEDDITSAESESSEEEEGEQGDPQNAATRQQLEWDDSTLS
Y

TRTRPLEQKLISEEDLAANDILDYKDDDDKV

Tag:	C-Myc/DDK
Purity:	> 80% as determined by SDS-PAGE and Coomassie blue staining
Concentration:	>0.05 µg/µL as determined by microplate BCA method
Labeling Method:	Labeled with [U- ¹³ C ₆ , ¹⁵ N ₄]-L-Arginine and [U- ¹³ C ₆ , ¹⁵ N ₂]-L-Lysine
Buffer:	25 mM Tris-HCl, 100 mM glycine, pH 7.3
Storage:	Store at -80°C. Avoid repeated freeze-thaw cycles.



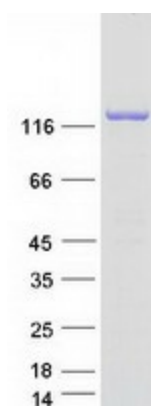
[View online »](#)

Stability:	Stable for 3 months from receipt of products under proper storage and handling conditions.
RefSeq:	NP_001009566
RefSeq Size:	5209
RefSeq ORF:	2943
Synonyms:	ALC-ALPHA; alcalpha1; alcalpha2; CDHR12; CST-1; CSTN1; PIK3CD; XB31alpha
Locus ID:	22883
UniProt ID:	O94985
Cytogenetics:	1p36.22

Summary: This gene is a member of the calsynenin family, a subset of the cadherin superfamily. The encoded transmembrane protein, also known as alcadein-alpha, is thought to bind to kinesin-1 motors to mediate the axonal anterograde transport of certain types of vesicle. Amyloid precursor protein (APP) is trafficked via these vesicles and so this protein is being investigated to see how it might contribute to the mechanisms underlying Alzheimer's disease. Alternative splicing results in multiple transcript variants. [provided by RefSeq, Nov 2014]

Protein Families: Transmembrane

Product images:



Coomassie blue staining of purified CLSTN1 protein (Cat# [TP323651]). The protein was produced from HEK293T cells transfected with CLSTN1 cDNA clone (Cat# [RC223651]) using MegaTran 2.0 (Cat# [TT210002]).