

## Product datasheet for PH323634

### BMF (NM\_033503) Human Mass Spec Standard

#### Product data:

Product Type:	Mass Spec Standards
Description:	BMF MS Standard C13 and N15-labeled recombinant protein (NP_277038)
Species:	Human
Expression Host:	HEK293
Expression cDNA Clone or AA Sequence:	RC223634
Predicted MW:	20.3 kDa
Protein Sequence:	>RC223634 representing NM_033503 Red=Cloning site Green=Tags(s)  MEPSQCVEELEDVDFQPEDGEPVTQPGSLLSADLFAQSLLDCPLSRLQLFPLTHCCGPGLRPTSQEDKAT QTLSPASPSPGVMLPCGVTEEPQRLFYGNAGYRLPLPASFPVLPVIGEQPPEGQWQHQAQAEVQIARKLQCI ADQFHRLHVQHQQNQRVWWQILLFLHNLALNGEENRNGAGPR  TRTRPLEQKLI SEEDLAANDILDYKDDDDKV
Tag:	C-Myc/DDK
Purity:	> 80% as determined by SDS-PAGE and Coomassie blue staining
Concentration:	>0.05 µg/µL as determined by microplate BCA method
Labeling Method:	Labeled with [U- <sup>13</sup> C <sub>6</sub> , <sup>15</sup> N <sub>4</sub> ]-L-Arginine and [U- <sup>13</sup> C <sub>6</sub> , <sup>15</sup> N <sub>2</sub> ]-L-Lysine
Buffer:	25 mM Tris-HCl, 100 mM glycine, pH 7.3
Storage:	Store at -80°C. Avoid repeated freeze-thaw cycles.
Stability:	Stable for 3 months from receipt of products under proper storage and handling conditions.
RefSeq:	<u><a href="#">NP_277038</a></u>
RefSeq Size:	4551
RefSeq ORF:	552
Locus ID:	90427
UniProt ID:	<u><a href="#">Q96LC9</a></u>
Cytogenetics:	15q15.1



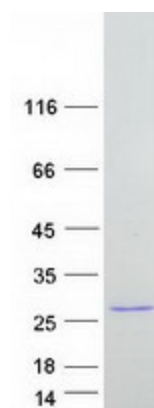
[View online »](#)

**Summary:**

The protein encoded by this gene belongs to the BCL2 protein family. BCL2 family members form hetero- or homodimers and act as anti- or pro-apoptotic regulators that are involved in a wide variety of cellular activities. This protein contains a single BCL2 homology domain 3 (BH3), and has been shown to bind BCL2 proteins and function as an apoptotic activator. This protein is found to be sequestered to myosin V motors by its association with dynein light chain 2, which may be important for sensing intracellular damage and triggering apoptosis. Alternatively spliced transcript variants encoding different isoforms have been identified. [provided by RefSeq, Jul 2008]

**Protein Families:**

Druggable Genome

**Product images:**

Coomassie blue staining of purified BMF protein (Cat# [TP323634]). The protein was produced from HEK293T cells transfected with BMF cDNA clone (Cat# [RC223634]) using MegaTran 2.0 (Cat# [TT210002]).