

## Product datasheet for PH323624

### GAS2 (NM\_005256) Human Mass Spec Standard

#### Product data:

Product Type:	Mass Spec Standards
Description:	GAS2 MS Standard C13 and N15-labeled recombinant protein (NP_005247)
Species:	Human
Expression Host:	HEK293
Expression cDNA Clone or AA Sequence:	RC223624
Predicted MW:	34.9 kDa
Protein Sequence:	>RC223624 protein sequence Red=Cloning site Green=Tags(s)  MCTALSPKVRSGPGLSDMHQYSQWLASRHEANLLPMKEDLALWLTNLLGKEITAETFMEKLDNGALLCQL AETMQEKFKESMDANKPTKNLPLKKIPCKTSAPSGSFFARDNTANFLSWCRDLGVDCTCFESEGVLVHK QPREVCLLLELGRIAARYGVEPPGLIKLEKEIEQEETLSAPSPSPSSKSSGKKSTGNLLDDAVKRIS EDPPCKCPNKFCVERLSQGRYRVGEKILFIRMLHNKHVMVRVGGGWETFAGYLLKHDPICRLQISRVDGK TSPIQSKSPTLKDMNPDNYLVVSASYKAKKEIK  TRTRPLEQKLISEEDLAANDILDYKDDDDKV
Tag:	C-Myc/DDK
Purity:	> 80% as determined by SDS-PAGE and Coomassie blue staining
Concentration:	>0.05 µg/µL as determined by microplate BCA method
Labeling Method:	Labeled with [U- <sup>13</sup> C <sub>6</sub> , <sup>15</sup> N <sub>4</sub> ]-L-Arginine and [U- <sup>13</sup> C <sub>6</sub> , <sup>15</sup> N <sub>2</sub> ]-L-Lysine
Buffer:	25 mM Tris-HCl, 100 mM glycine, pH 7.3
Storage:	Store at -80°C. Avoid repeated freeze-thaw cycles.
Stability:	Stable for 3 months from receipt of products under proper storage and handling conditions.
RefSeq:	<u><a href="#">NP_005247</a></u>
RefSeq Size:	2031
RefSeq ORF:	939
Synonyms:	GAS-2
Locus ID:	2620



[View online »](#)

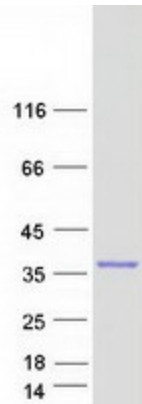
UniProt ID: [O43903](#)

Cytogenetics: 11p14.3

**Summary:** The protein encoded by this gene is a caspase-3 substrate that plays a role in regulating microfilament and cell shape changes during apoptosis. It can also modulate cell susceptibility to p53-dependent apoptosis by inhibiting calpain activity. Alternative splicing results in multiple transcript variants. [provided by RefSeq, May 2017]

Protein Families: Druggable Genome

### Product images:



Coomassie blue staining of purified GAS2 protein (Cat# [TP323624]). The protein was produced from HEK293T cells transfected with GAS2 cDNA clone (Cat# [RC223624]) using MegaTran 2.0 (Cat# [TT210002]).