

Product datasheet for PH323601

TRF2 (TERF2) (NM_005652) Human Mass Spec Standard

Product data:

Product Type:	Mass Spec Standards
Description:	TERF2 MS Standard C13 and N15-labeled recombinant protein (NP_005643)
Species:	Human
Expression Host:	HEK293
Expression cDNA Clone or AA Sequence:	RC223601
Predicted MW:	55.4 kDa
Protein Sequence:	>RC223601 representing NM_005652 Red=Cloning site Green=Tags(s)

MAGGGSSDGSRAAGRASRSSGRARRGRHEPGLGPAERGAGEARLEEAVNRWVLKFYFHEALRAFRG
 SRYGDFRQIRDIMQALLVRPLGKEHTVSRLLRVMQCLSRIEEENLDCSFDMEALTPLESAINVLEMILK
 TEFTL TEAVVSSRKL VKEAAV I ICIKNKEFEKASKILKHKMSKDPPTTQKLRNDLLNI IREKNLAHPVIQ
 NFSYETFQKMLRFLESHLDDAEPYLLTMAKKALKSESAASSTGKEDKQPAPGPVEKPPREPARQLRNPP
 TTIGMMLKAAFKTL SGAQDSEAAFAKLDQKDLVLPQTALPASPALKNKRPRKDENE SAPADGEGGSEL
 QPKNKRMTISRLVLEEDSQSTEP SAGLNSSQEAASAPPSKPTVLNQPLPGEKNPKVPK GKWNSSNGVEEK
 ETWVEEDEL FQVQAAPDEDSTTNI TTKQKWTVEESEWVKAGVQKYGEGNAAI SKNYPFVNRTAVMIKDR
 WRTMKRLGMN

TRTRPLEQKLI SEEDLAANDILDYKDDDDKV

Tag:	C-Myc/DDK
Purity:	> 80% as determined by SDS-PAGE and Coomassie blue staining
Concentration:	>0.05 µg/µL as determined by microplate BCA method
Labeling Method:	Labeled with [U- 13C6, 15N4]-L-Arginine and [U- 13C6, 15N2]-L-Lysine
Buffer:	25 mM Tris-HCl, 100 mM glycine, pH 7.3
Storage:	Store at -80°C. Avoid repeated freeze-thaw cycles.
Stability:	Stable for 3 months from receipt of products under proper storage and handling conditions.
RefSeq:	NP_005643
RefSeq Size:	2909
RefSeq ORF:	1500



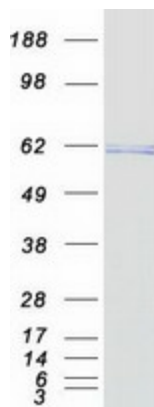
[View online »](#)

Synonyms: TRBF2; TRF2
Locus ID: 7014
UniProt ID: [Q15554](#)
Cytogenetics: 16q22.1

Summary: This gene encodes a telomere specific protein, TERF2, which is a component of the telomere nucleoprotein complex. This protein is present at telomeres in metaphase of the cell cycle, is a second negative regulator of telomere length and plays a key role in the protective activity of telomeres. While having similar telomere binding activity and domain organization, TERF2 differs from TERF1 in that its N terminus is basic rather than acidic. [provided by RefSeq, Jul 2008]

Protein Families: Transcription Factors

Product images:



Coomassie blue staining of purified TERF2 protein (Cat# [TP323601]). The protein was produced from HEK293T cells transfected with TERF2 cDNA clone (Cat# [RC223601]) using MegaTran 2.0 (Cat# [TT210002]).