

## Product datasheet for PH323599

### LRTM2 (NM\_001039029) Human Mass Spec Standard

#### Product data:

Product Type:	Mass Spec Standards
Description:	LRTM2 MS Standard C13 and N15-labeled recombinant protein (NP_001034118)
Species:	Human
Expression Host:	HEK293
Expression cDNA Clone or AA Sequence:	RC223599
Predicted MW:	41 kDa
Protein Sequence:	>RC223599 representing NM_001039029 <span style="color: red;">Red</span> =Cloning site <span style="color: green;">Green</span> =Tags(s)  MLAPGSSPGQRGRLALQWRQVSWITCWIALYAVEALPTCPFCKCDSRSLEVDCSGLGLTTVPPDVPAAT RTLLLLNNKLSALPSWAFANLSSLQRLDLNNFLDRLPRSIKFDLTLNLTQLRNNISIRTLDRDLLRHSP LLRHLDSLINGLAQLPPGLFDGLLALRSLSLRSNRLQNLDRLTFEPLANLQLQVGNPWECDCNLREFK HWMEWFSYRGRLDQLACTLPKELRGKDMRMVPMEMFNYSQLEDENSSAGLDIPGPPCTKASPEPAKPK PGAEPEPEPSTACPQKQRHRPASVRRAMGTVIIAGVVCGVVCIMMVVAAAAYGCIYASLMKAYHRELKCRQ PLMGDPEGEHEDQKQISSVA  <span style="color: red;">TR</span> <span style="color: green;">TRPLEQKLI</span> <span style="color: green;">SEEDLAANDILDYKDDDDKV</span>
Tag:	C-Myc/DDK
Purity:	> 80% as determined by SDS-PAGE and Coomassie blue staining
Concentration:	>0.05 µg/µL as determined by microplate BCA method
Labeling Method:	Labeled with [U- <sup>13</sup> C <sub>6</sub> , <sup>15</sup> N <sub>4</sub> ]-L-Arginine and [U- <sup>13</sup> C <sub>6</sub> , <sup>15</sup> N <sub>2</sub> ]-L-Lysine
Buffer:	25 mM Tris-HCl, 100 mM glycine, pH 7.3
Storage:	Store at -80°C. Avoid repeated freeze-thaw cycles.
Stability:	Stable for 3 months from receipt of products under proper storage and handling conditions.
RefSeq:	<u><a href="#">NP_001034118</a></u>
RefSeq Size:	3688
RefSeq ORF:	1110
Locus ID:	654429
UniProt ID:	<u><a href="#">Q8N967</a></u>

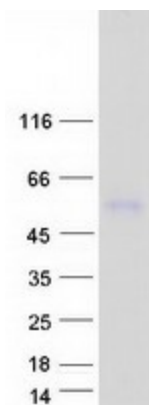


[View online »](#)

Cytogenetics: 12p13.33

Protein Families: Transmembrane

### Product images:



Coomassie blue staining of purified LRTM2 protein (Cat# [TP323599]). The protein was produced from HEK293T cells transfected with LRTM2 cDNA clone (Cat# [RC223599]) using MegaTran 2.0 (Cat# [TT210002]).