

Product datasheet for PH323580

RASGRF2 (NM_006909) Human Mass Spec Standard

Product data:

| | |
|---------------------------------------|---|
| Product Type: | Mass Spec Standards |
| Description: | RASGRF2 MS Standard C13 and N15-labeled recombinant protein (NP_008840) |
| Species: | Human |
| Expression Host: | HEK293 |
| Expression cDNA Clone or AA Sequence: | RC223580 |
| Predicted MW: | 140.6 kDa |
| Protein Sequence: | >RC223580 representing NM_006909 Red=Cloning site Green=Tags(s) |

MQKSVRYNEGHALYLAFLARKEGTRKGFSLSKTAEASRWHEKWFALYQNVLFYFEGEQSCRPAAGMYLLEG
CSCERTPAPPFRAGAGQGGVVDALDKQYFTVLFHGEQKPLELRCEEEQDGKEWMEAIHQASYADILIER
EVLMMQKYIHLVQIVETEKIAANQLRHQLEDQDTEIERLKSEIIALNKTKERMPYQSNQDEDEPDIKKIK
KVQSFMRGWLCCRKWKTIQDYICSPHAESMRKRNIQIVFTMVEAESEYVHQLYILVNGFLRPLRMAASSK
KPPISHDDVSSIFLNSETIMFLHEIFHQGLKARIANWPTLILADLFDILLPMLNIYQEFVRNHQYSLQVL
ANCKQNRDFDKLLKQYEANPACEGRMLETFLTYPMFQIPRYIITLHELLAHTPHEHVERKSLEFAKSKLE
ELSRVMHDEVSDTENIRKNLAIERMIVEGCDILLDTSQTFIRQGSIIQVPSVERGKLSKVRGSLKKE
GERQCFLFTKHFILCTRSSGGKLLHLLKTGGVLSLIDCTLIEEPDASDDDSKGGQVFGHLDKIVVEPPD
AAAFVTVLLAPSRQEKAAWMSDIIQCVDNIRCNGLMTIVFEENSKVTVPHEIKSDARLHKDDTDICFSKT
LNSCKVPQIRYASVERLLERLTDLRFLSIDFLNTHYRIFTTAAVVLGKLSDIYKRPFTSIPVRSLEL
FFATSQNNRGEHLVDGKSPRLCRKFSPPPLAVSRTSSPVRARKLSLTSPLNSKIGALDLTSSSPTTTT
QSPAASPPHTGQIPLDLRGLSSPEQSPGTVEENVNPNRVDLCNKLKRSIQKAVLESAPADRAGVESSP
AADTTELSPCRSPSTPRHLRYRQPGGQTADNAHCSVSPASAFIAIATAAGHGSPGPNNTERTCDKEFII
RRTATNRVNLVLRHWVSKHAQDFELNNELKMNVLNLEEVLDPDLLPQERKAAANILRALSQDDQDDIIH
LKLEDI IQMTDCMKAECFESLSAMELAEQITLLDHVIFRSIPYEEFLGQGMKLDKNERTPYIMKTSQHF
NDMSNLVASQIMNYADVSSRANAIEKWVAVADICRCLHNYNGVLEITSALNRSAYRLKKTWAKVSKQTK
ALMDKLQKTVSSEGRFKNLRETLKNCNPPAVPYLGMYLTDLAFIEEGTPNFTEEGLVNF SKMRMISHIIR
EIRQFQTSYRIDHQPKVAQYLLDKDLIIDEDTLYELSLKIEPRLPA

TRRLEQKLI SEEDLAANDILDYKDDDDKV

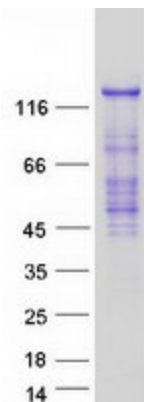
| | |
|------------------|--|
| Tag: | C-Myc/DDK |
| Purity: | > 80% as determined by SDS-PAGE and Coomassie blue staining |
| Concentration: | >0.05 µg/µL as determined by microplate BCA method |
| Labeling Method: | Labeled with [U- ¹³ C ₆ , ¹⁵ N ₄]-L-Arginine and [U- ¹³ C ₆ , ¹⁵ N ₂]-L-Lysine |



[View online »](#)

| | |
|-------------------|---|
| Buffer: | 25 mM Tris-HCl, 100 mM glycine, pH 7.3 |
| Storage: | Store at -80°C. Avoid repeated freeze-thaw cycles. |
| Stability: | Stable for 3 months from receipt of products under proper storage and handling conditions. |
| RefSeq: | NP_008840 |
| RefSeq Size: | 4078 |
| RefSeq ORF: | 3711 |
| Synonyms: | GRF2; RAS-GRF2 |
| Locus ID: | 5924 |
| UniProt ID: | O14827 , A0A2X0SFL3 , Q68DX5 |
| Cytogenetics: | 5q14.1 |
| Summary: | RAS GTPases cycle between an inactive GDP-bound state and an active GTP-bound state. This gene encodes a calcium-regulated nucleotide exchange factor activating both RAS and RAS-related protein, RAC1, through the exchange of bound GDP for GTP, thereby, coordinating the signaling of distinct mitogen-activated protein kinase pathways. [provided by RefSeq, Oct 2011] |
| Protein Pathways: | MAPK signaling pathway |

Product images:



Coomassie blue staining of purified RASGRF2 protein (Cat# [TP323580]). The protein was produced from HEK293T cells transfected with RASGRF2 cDNA clone (Cat# [RC223580]) using MegaTran 2.0 (Cat# [TT210002]).