

Product datasheet for PH323575

CTIP1 (BCL11A) (NM_138559) Human Mass Spec Standard

Product data:

Product Type:	Mass Spec Standards
Description:	BCL11A MS Standard C13 and N15-labeled recombinant protein (NP_612569)
Species:	Human
Expression Host:	HEK293
Expression cDNA Clone or AA Sequence:	RC223575
Predicted MW:	26.7 kDa
Protein Sequence:	>RC223575 representing NM_138559 Red =Cloning site Green =Tags(s) MSRRKQGGKPKHLKREFSPEPLEAILTDDEPDHGPLGAPEGDHLLTCGQCQMNFLGDILIFIEHKRQK CNGSLCLEKAVDKPPSPPIEMKKASNPVEVGIQVTPEDDDCLSTSSRGICPKQEHIADKLLHWRGLSSP RSAHGALIPTPGMSAEYAPQGICKDEPSSYTCTTCKQPFTSAWFLQHAQNTHGLRIYLESEHGSP LTPR VLHTPPFGVVPRELKMGCSFRMEAREPLSSEKI TR TRPLEQKLI SEEDLA ANDILDYK DDDDKV
Tag:	C-Myc/DDK
Purity:	> 80% as determined by SDS-PAGE and Coomassie blue staining
Concentration:	>0.05 µg/µL as determined by microplate BCA method
Labeling Method:	Labeled with [U- ¹³ C ₆ , ¹⁵ N ₄]-L-Arginine and [U- ¹³ C ₆ , ¹⁵ N ₂]-L-Lysine
Buffer:	25 mM Tris-HCl, 100 mM glycine, pH 7.3
Storage:	Store at -80°C. Avoid repeated freeze-thaw cycles.
Stability:	Stable for 3 months from receipt of products under proper storage and handling conditions.
RefSeq:	NP_612569
RefSeq Size:	2358
RefSeq ORF:	729
Synonyms:	BCL11A-L; BCL11a-M; BCL11A-S; BCL11A-XL; CTIP1; DILOS; EVI9; HBFQTL5; ZNF856
Locus ID:	53335
UniProt ID:	Q9H165



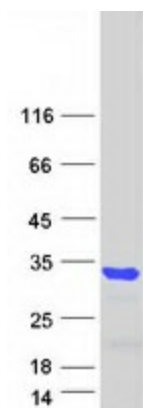
[View online »](#)

Cytogenetics: 2p16.1

Summary: This gene encodes a C2H2 type zinc-finger protein by its similarity to the mouse Bcl11a/Evi9 protein. The corresponding mouse gene is a common site of retroviral integration in myeloid leukemia, and may function as a leukemia disease gene, in part, through its interaction with BCL6. During hematopoietic cell differentiation, this gene is down-regulated. It is possibly involved in lymphoma pathogenesis since translocations associated with B-cell malignancies also deregulates its expression. Multiple transcript variants encoding several different isoforms have been found for this gene. [provided by RefSeq, Jul 2008]

Protein Families: Transcription Factors

Product images:



Coomassie blue staining of purified BCL11A protein (Cat# [TP323575]). The protein was produced from HEK293T cells transfected with BCL11A cDNA clone (Cat# [RC223575]) using MegaTran 2.0 (Cat# [TT210002]).