

Product datasheet for PH323504

Methyltransferase like 6 (METTL6) (NM_152396) Human Mass Spec Standard

Product data:

Product Type:	Mass Spec Standards
Description:	METTL6 MS Standard C13 and N15-labeled recombinant protein (NP_689609)
Species:	Human
Expression Host:	HEK293
Expression cDNA Clone or AA Sequence:	RC223504
Predicted MW:	33.1 kDa
Protein Sequence:	>RC223504 representing NM_152396 Red=Cloning site Green=Tags(s) MASLQRKGLQARILTSEEEEKLRDQTLVSDFKQQKLEQEAQKNWDLFYKRNSTNFFKDRHWTTREFEEL RSCREFEDQKLTMLEAGCGVGNCLFPLLEEDPNIFAYACDFSPRAIEYVKQNPLYDTERCKVFQCDLTKD DLLDHVPPESVDVYMLIFVLSAVHPDKMHLVLQNIYKVLKPGKSVLFRDYGLYDHAMLRFKASSKLGENT YVRQDGTRSYFFTDFFLAQLFMDTGYYEEVVNEYVVFRETVNKKEGLCVPRVFLQSKFLKPPKNPSPVVLGL DPKS TRTRPLEQKLISEEDLAANDILDYKDDDDKV
Tag:	C-Myc/DDK
Purity:	> 80% as determined by SDS-PAGE and Coomassie blue staining
Concentration:	>0.05 µg/µL as determined by microplate BCA method
Labeling Method:	Labeled with [U- ¹³ C ₆ , ¹⁵ N ₄]-L-Arginine and [U- ¹³ C ₆ , ¹⁵ N ₂]-L-Lysine
Buffer:	25 mM Tris-HCl, 100 mM glycine, pH 7.3
Storage:	Store at -80°C. Avoid repeated freeze-thaw cycles.
Stability:	Stable for 3 months from receipt of products under proper storage and handling conditions.
RefSeq:	<u>NP_689609</u>
RefSeq Size:	2499
RefSeq ORF:	852
Locus ID:	131965
UniProt ID:	<u>Q8TCB7</u>



[View online »](#)

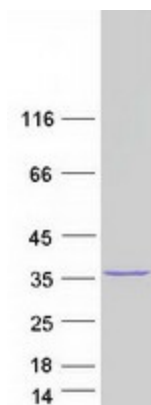
Cytogenetics: 3p25.1

Summary: Probable methyltransferase.[UniProtKB/Swiss-Prot Function]

Protein Families: Druggable Genome

Protein Pathways: Androgen and estrogen metabolism, Histidine metabolism, Selenoamino acid metabolism, Tyrosine metabolism

Product images:



Coomassie blue staining of purified METTL6 protein (Cat# [TP323504]). The protein was produced from HEK293T cells transfected with METTL6 cDNA clone (Cat# [RC223504]) using MegaTran 2.0 (Cat# [TT210002]).