

Product datasheet for PH323500

C1QL3 (NM_001010908) Human Mass Spec Standard

Product data:

Product Type:	Mass Spec Standards
Description:	C1QL3 MS Standard C13 and N15-labeled recombinant protein (NP_001010908)
Species:	Human
Expression Host:	HEK293
Expression cDNA Clone or AA Sequence:	RC223500
Predicted MW:	26.5 kDa
Protein Sequence:	>RC223500 representing NM_001010908 Red=Cloning site Green=Tags(s) MVLILLVILIPVLVSSAGTSAHYEMLGTCRMVCDPYGGTKAPSTAATPDRGLMQSLPTFIQGPKEAGRPG KAGPRGPPGEPGPPGPMGPPGEGKGEPRQGLPGPPGAPGLNAAGAI SAATYSTVPKIAFYAGLKRQHEGY EVLKFDDVVTNLGNHYDPTTGKFTCSIPGIYFFTYHVLMRGGDGTSMWADLCKNNQVRASIAIQDADQNY DYASNSVVLHLEPGDEVYIKLDGGKAHGGNNNKYSTFSGFIIYAD TRTRPLEQKLI SEEDLAANDILDYKDDDDKV
Tag:	C-Myc/DDK
Purity:	> 80% as determined by SDS-PAGE and Coomassie blue staining
Concentration:	>0.05 µg/µL as determined by microplate BCA method
Labeling Method:	Labeled with [U- ¹³ C ₆ , ¹⁵ N ₄]-L-Arginine and [U- ¹³ C ₆ , ¹⁵ N ₂]-L-Lysine
Buffer:	25 mM Tris-HCl, 100 mM glycine, pH 7.3
Storage:	Store at -80°C. Avoid repeated freeze-thaw cycles.
Stability:	Stable for 3 months from receipt of products under proper storage and handling conditions.
RefSeq:	NP_001010908
RefSeq Size:	2493
RefSeq ORF:	765
Synonyms:	C1ql; C1QTNF13; CTRP13; K100
Locus ID:	389941
UniProt ID:	Q5VWW1 , A0A3B0J0F3



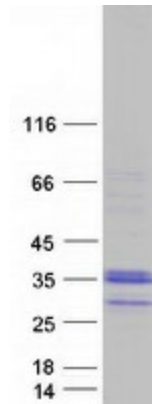
[View online »](#)

Cytogenetics: 10p13

Summary: May regulate the number of excitatory synapses that are formed on hippocampus neurons. Has no effect on inhibitory synapses (By similarity). Plays a role in glucose homeostasis. Via AMPK signaling pathway, stimulates glucose uptake in adipocytes, myotubes and hepatocytes and enhances insulin-stimulated glucose uptake. In a hepatoma cell line, reduces the expression of gluconeogenic enzymes G6PC and PCK1 and hence decreases de novo glucose production (By similarity).[UniProtKB/Swiss-Prot Function]

Protein Families: Secreted Protein

Product images:



Coomassie blue staining of purified C1QL3 protein (Cat# [TP323500]). The protein was produced from HEK293T cells transfected with C1QL3 cDNA clone (Cat# [RC223500]) using MegaTran 2.0 (Cat# [TT210002]).