

Product datasheet for PH323499

CHD1L (NM_004284) Human Mass Spec Standard

Product data:

Product Type:	Mass Spec Standards
Description:	CHD1L MS Standard C13 and N15-labeled recombinant protein (NP_004275)
Species:	Human
Expression Host:	HEK293
Expression cDNA Clone or AA Sequence:	RC223499
Predicted MW:	100.8 kDa
Protein Sequence:	>RC223499 representing NM_004284 Red=Cloning site Green=Tags(s)

MERAGATSRGGQAPGFLRLRLHTEGRAEAARVQEQDLRQWGLTGIHLRSYQLEGVNWL AQRFCQNGCILG
DEMGLGKTCQTIALFIYLAGRLNDEGPFLILCPLSVLSNWKEEMQRFAPGLSCVTYAGDKEERACLQDDL
KQESRFHVLLTTYEICLKDASFLKSPWSVLVDEAHLKKNQSSLLHKTSEFSVVFSLLLTGTPIQNSL
QELYSLLSFVEPDLFSKEEVGDFIQRYQDIEKESESASELHKLQPFLRRVKAEVATELPKKTEVVIYH
GMSALQKKYYKAILMKDLDAFENETAKKVKLQNILSQLRKCVDHPYLDGVEPEPFEVGDHLEASGKLH
LLDKLLAFLYSGGHRVLLFSQMTQMLDILQDYMDYRGYSYERVDGSGRGEERHLAIKNFGQQPIFVFLS
TRAGGVGMNLTAADTVIFVDSDFNPQNDLQAAARAHRIQNKSVKVIIRLIGRDTVEEIVYRKAASKLQLT
NMIIEGGHFTLGAQKPAADADLQLSEILKFGLDKLLASEGSTMDEIDLESILGETKDGQWVSDALPAAEG
GSRDQEEGKNHMYLFEQKDYKEPSKEDRKSFEQLVNLQKTLLEKASQEGRSLRNKGSVLIPGLVEGSTK
RKRVLSPEELEDQKQRQEAARRRRIIEKKRQKEEAHKKKMAWVESNNYQSFCLPSESEPEDLENG
EESSAELDYQDPDATSLKYVSGDVTHPQAGAEDALIVHCVDSDSGHWGRGGLFTALEKRSAPRKIYELAG
KMKDLSLGGVLLFPVDDKESRNKGQDLLALIVAQRDRSNVLSGIKMAALEEGLKKIFLAAKKKKASVHL
PRIGHATKGFNWyGTERLIRKHLAARGIPTIYIYFPRSKSAVLHAQSSSSSRQLVP

TRTRPLEQKLISEEDLAANDILDYKDDDDKV

Tag:	C-Myc/DDK
Purity:	> 80% as determined by SDS-PAGE and Coomassie blue staining
Concentration:	>0.05 µg/µL as determined by microplate BCA method
Labeling Method:	Labeled with [U- ¹³ C ₆ , ¹⁵ N ₄]-L-Arginine and [U- ¹³ C ₆ , ¹⁵ N ₂]-L-Lysine
Buffer:	25 mM Tris-HCl, 100 mM glycine, pH 7.3
Storage:	Store at -80°C. Avoid repeated freeze-thaw cycles.
Stability:	Stable for 3 months from receipt of products under proper storage and handling conditions.



[View online »](#)

RefSeq: [NP_004275](#)

RefSeq Size: 3023

RefSeq ORF: 2691

Synonyms: ALC1; CHDL

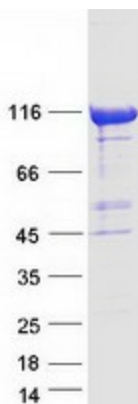
Locus ID: 9557

UniProt ID: [Q86WJ1](#)

Cytogenetics: 1q21.1

Summary: This gene encodes a DNA helicase protein involved in DNA repair. The protein converts ATP to add poly(ADP-ribose) as it regulates chromatin relaxation following DNA damage. Overexpression of this gene has been linked to several types of cancers. [provided by RefSeq, Feb 2017]

Product images:



Coomassie blue staining of purified CHD1L protein (Cat# [TP323499]). The protein was produced from HEK293T cells transfected with CHD1L cDNA clone (Cat# [RC223499]) using MegaTran 2.0 (Cat# [TT210002]).