

Product datasheet for PH323464

GAD65 (GAD2) (NM_000818) Human Mass Spec Standard

Product data:

Product Type:	Mass Spec Standards
Description:	GAD2 MS Standard C13 and N15-labeled recombinant protein (NP_000809)
Species:	Human
Expression Host:	HEK293
Expression cDNA Clone or AA Sequence:	RC223464
Predicted MW:	65.4 kDa
Protein Sequence:	>RC223464 protein sequence Red=Cloning site Green=Tags(s)

MASPGSGFWSFGSEDSGSDSENPGTARAWCQVAQKFTGGIGNKLCALLYGDAEKPAESGGSQPPRAARK
AACACDQKPCSCSKVDVNYAFLHATDLLPACDGERPTLAFLQDVMNILLQYVVKSFDRSTKVIDFHYPNE
LLQEYNWELADQPQNLEEILMHCQTTLKYAIKTGHPRYFNQLSTGLDMVGLAADWLTSTANTNMFTYEIA
PVFVLLLEVTLKMKREIIGWPGGSGDGI FSPGGAISNMYAMMIARFKMFPEVKEKGMAALPRLIAFTSEH
SHFSLKKGAAALGIGTDSVILIKCDERGMIPSDLERRILEAKQKGFVPFLVSATAGTTVYGAFDPLLAV
ADICKKYKIWMHVDAAWGGGLMSRKHKWKLSGVERANSVTWNPHKMMGVPLQCSALLVREEGLMQNCNQ
MHASYLFQQDKHYDL SYDTGDKALQCGRHVDVFKLWLMWRAKGTTFEAHVDKCLELAEYLYNI IKNREG
YEMVFDGKPKQHTNVCFWYIPPSLRTLLEDNEERMSRLSKVAPVIKARMEYGTMMVSYQPLGDKVNFVRMV
ISNPAATHQDIDFLIEEIERLGQDL

SGP TRTRPLEQKLI SEEDLAANDILDYKDDDDKV

Tag:	C-Myc/DDK
Purity:	> 80% as determined by SDS-PAGE and Coomassie blue staining
Concentration:	>0.05 µg/µL as determined by microplate BCA method
Labeling Method:	Labeled with [U- 13C6, 15N4]-L-Arginine and [U- 13C6, 15N2]-L-Lysine
Buffer:	25 mM Tris-HCl, 100 mM glycine, pH 7.3
Storage:	Store at -80°C. Avoid repeated freeze-thaw cycles.
Stability:	Stable for 3 months from receipt of products under proper storage and handling conditions.
RefSeq:	NP_000809
RefSeq Size:	2824
RefSeq ORF:	1755



[View online »](#)

Synonyms: GAD65

Locus ID: 2572

UniProt ID: [Q05329](#), [Q5VZ30](#)

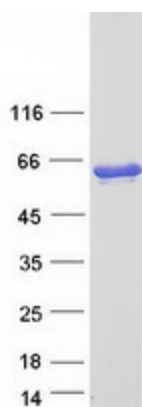
Cytogenetics: 10p12.1

Summary: This gene encodes one of several forms of glutamic acid decarboxylase, identified as a major autoantigen in insulin-dependent diabetes. The enzyme encoded is responsible for catalyzing the production of gamma-aminobutyric acid from L-glutamic acid. A pathogenic role for this enzyme has been identified in the human pancreas since it has been identified as an autoantibody and an autoreactive T cell target in insulin-dependent diabetes. This gene may also play a role in the stiff man syndrome. Alternative splicing results in multiple transcript variants that encode the same protein. [provided by RefSeq, Oct 2008]

Protein Families: Druggable Genome

Protein Pathways: Alanine, aspartate and glutamate metabolism, beta-Alanine metabolism, Butanoate metabolism, Metabolic pathways, Taurine and hypotaurine metabolism, Type I diabetes mellitus

Product images:



Coomassie blue staining of purified GAD2 protein (Cat# [TP323464]). The protein was produced from HEK293T cells transfected with GAD2 cDNA clone (Cat# [RC223464]) using MegaTran 2.0 (Cat# [TT210002]).