

Product datasheet for PH323455

GPLD1 (NM_177483) Human Mass Spec Standard

Product data:

Product Type:	Mass Spec Standards
Description:	GPLD1 MS Standard C13 and N15-labeled recombinant protein (NP_803436)
Species:	Human
Expression Host:	HEK293
Expression cDNA Clone or AA Sequence:	RC223455
Predicted MW:	17.3 kDa
Protein Sequence:	>RC223455 representing NM_177483 Red=Cloning site Green=Tags(s) MSAFRLWPGLLIMLGSLCHRGSPCGLSTHVEIGHRALEFLQLHNGRVNYRELLLEHQDAYQAGIVFPDCF YPSICKGGKFHDVSESTHWTPFLNASVHYIRENYPLPWEKDTEKLVAFVFGITSHMAADVSWHSLGLEQG FLRTMGAIDFHGSYSEAHSAAGDFGTVYLHLLNFLVV TRTRPLEQKLI SEEDLAANDILDYKDDDDKV
Tag:	C-Myc/DDK
Purity:	> 80% as determined by SDS-PAGE and Coomassie blue staining
Concentration:	>0.05 µg/µL as determined by microplate BCA method
Labeling Method:	Labeled with [U- ¹³ C ₆ , ¹⁵ N ₄]-L-Arginine and [U- ¹³ C ₆ , ¹⁵ N ₂]-L-Lysine
Buffer:	25 mM Tris-HCl, 100 mM glycine, pH 7.3
Storage:	Store at -80°C. Avoid repeated freeze-thaw cycles.
Stability:	Stable for 3 months from receipt of products under proper storage and handling conditions.
RefSeq:	NP_803436
RefSeq Size:	1096
RefSeq ORF:	528
Synonyms:	GPIPLD; GPIPLDM; MGC22590; PIGPLD; PIGPLD1
Locus ID:	2822
UniProt ID:	P80108



[View online »](#)

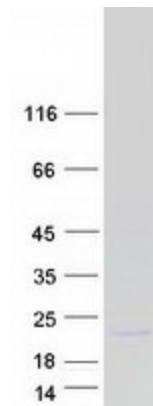
Cytogenetics: 6p22.3

Summary: Many proteins are tethered to the extracellular face of eukaryotic plasma membranes by a glycosylphosphatidylinositol (GPI) anchor. The GPI-anchor is a glycolipid found on many blood cells. The protein encoded by this gene is a GPI degrading enzyme. Glycosylphosphatidylinositol specific phospholipase D1 hydrolyzes the inositol phosphate linkage in proteins anchored by phosphatidylinositol glycans, thereby releasing the attached protein from the plasma membrane. [provided by RefSeq, Jul 2008]

Protein Families: Druggable Genome, Secreted Protein

Protein Pathways: Glycosylphosphatidylinositol(GPI)-anchor biosynthesis

Product images:



Coomassie blue staining of purified GPLD1 protein (Cat# [TP323455]). The protein was produced from HEK293T cells transfected with GPLD1 cDNA clone (Cat# [RC223455]) using MegaTran 2.0 (Cat# [TT210002]).