

## Product datasheet for PH323431

### GDPD1 (NM\_182569) Human Mass Spec Standard

#### Product data:

Product Type:	Mass Spec Standards
Description:	GDPD1 MS Standard C13 and N15-labeled recombinant protein (NP_872375)
Species:	Human
Expression Host:	HEK293
Expression cDNA Clone or AA Sequence:	RC223431
Predicted MW:	36 kDa
Protein Sequence:	>RC223431 representing NM_182569 <span style="color: red;">Red</span> =Cloning site <span style="color: green;">Green</span> =Tags(s)

MSSTAIFYLLSTLGGYLVTSFLLKYPYLLHQRKKQRFSLKHSHRGAGENLENTMAAFQHAVKIGTDT  
 LELDCHITKDEQVVVSHDENLKRATGVNVNISDLKYCELPYLGKLDVSFQACQCEGKDNRIPLKEVF  
 EAFNPTPINIDIKVNNVLIKKVSELVKRYNREHLTVWGNANYEIVEKCYKENSIPILFSLQRVLLILG  
 LFFTGLLPFPVPIREQFFEIPMPSIILKLKEPHTMSRSQKFLIWLSDLLMRKALFDHLTARGIQVYIWL  
 NEEQEYKRAFDLGATGVMTDYPTKLRDFLHNFS

TRTRPLEQKLISEEDLAANDILDYKDDDDKV

Tag:	C-Myc/DDK
Purity:	> 80% as determined by SDS-PAGE and Coomassie blue staining
Concentration:	>0.05 µg/µL as determined by microplate BCA method
Labeling Method:	Labeled with [U- <sup>13</sup> C <sub>6</sub> , <sup>15</sup> N <sub>4</sub> ]-L-Arginine and [U- <sup>13</sup> C <sub>6</sub> , <sup>15</sup> N <sub>2</sub> ]-L-Lysine
Buffer:	25 mM Tris-HCl, 100 mM glycine, pH 7.3
Storage:	Store at -80°C. Avoid repeated freeze-thaw cycles.
Stability:	Stable for 3 months from receipt of products under proper storage and handling conditions.
RefSeq:	<u><a href="#">NP_872375</a></u>
RefSeq Size:	1822
RefSeq ORF:	942
Synonyms:	GDE4
Locus ID:	284161


[View online »](#)

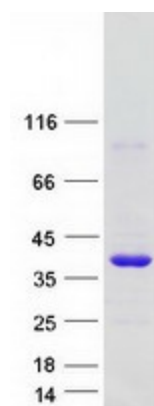
UniProt ID: [Q8N9F7](#)

Cytogenetics: 17q22

**Summary:** This gene encodes a member of the glycerophosphodiester phosphodiesterase family of enzymes that catalyze the hydrolysis of deacylated glycerophospholipids to glycerol phosphate and alcohol. The encoded protein is localized to the cytoplasm and concentrates near the perinuclear region. Alternative splicing results in multiple transcript variants. [provided by RefSeq, Oct 2009]

Protein Families: Transmembrane

### Product images:



Coomassie blue staining of purified GDPD1 protein (Cat# [TP323431]). The protein was produced from HEK293T cells transfected with GDPD1 cDNA clone (Cat# [RC223431]) using MegaTran 2.0 (Cat# [TT210002]).