

Product datasheet for PH323400

PRLH (NM_015893) Human Mass Spec Standard

Product data:

Product Type:	Mass Spec Standards
Description:	PRLH MS Standard C13 and N15-labeled recombinant protein (NP_056977)
Species:	Human
Expression Host:	HEK293
Expression cDNA Clone or AA Sequence:	RC223400
Predicted MW:	9.6 kDa
Protein Sequence:	>RC223400 protein sequence Red=Cloning site Green=Tags(s) MKVLRWLLCLLMLGLALRGAASRTHRHSMEIRTPDINPAWYASRGIRPVGRFGRRRATLGDVPKPGLRP RLTCFPLEGGAMSSQDG TRTRPLEQKLISEEDLAANDILDYKDDDDKV
Tag:	C-Myc/DDK
Purity:	> 80% as determined by SDS-PAGE and Coomassie blue staining
Concentration:	>0.05 µg/µL as determined by microplate BCA method
Labeling Method:	Labeled with [U- 13C6, 15N4]-L-Arginine and [U- 13C6, 15N2]-L-Lysine
Buffer:	25 mM Tris-HCl, 100 mM glycine, pH 7.3
Storage:	Store at -80°C. Avoid repeated freeze-thaw cycles.
Stability:	Stable for 3 months from receipt of products under proper storage and handling conditions.
RefSeq:	NP_056977
RefSeq Size:	264
RefSeq ORF:	263
Synonyms:	PRH; PRRP
Locus ID:	51052
UniProt ID:	P81277 , Q53QV7
Cytogenetics:	2q37.3

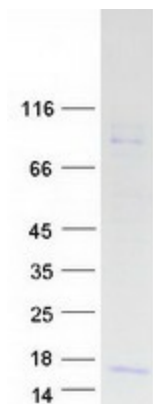


[View online »](#)

Summary: Stimulates prolactin (PRL) release and regulates the expression of prolactin through its receptor GPR10. May stimulate lactotrophs directly to secrete PRL.[UniProtKB/Swiss-Prot Function]

Protein Families: Secreted Protein, Transmembrane

Product images:



Coomassie blue staining of purified PRLH protein (Cat# [TP323400]). The protein was produced from HEK293T cells transfected with PRLH cDNA clone (Cat# [RC223400]) using MegaTran 2.0 (Cat# [TT210002]).