

Product datasheet for PH323397

Cyclophilin F (PPIF) (NM_005729) Human Mass Spec Standard

Product data:

Product Type:	Mass Spec Standards
Description:	PPIF MS Standard C13 and N15-labeled recombinant protein (NP_005720)
Species:	Human
Expression Host:	HEK293
Expression cDNA Clone or AA Sequence:	RC223397
Predicted MW:	22.04 kDa
Protein Sequence:	>RC223397 representing NM_005729 Red=Cloning site Green=Tags(s) MLALRCGSRWLGLLSVPRSVPLRLPAARACSKGSGDPSSSSSSGNPLVYLDVDANGKPLGRVVLELKADV VPKTAENFRALCTGEKGFYKGFSTFHRVIPSFMCQAGDFTNHNGTGGKSIYGSRFPDENFTLKHVGPVGL SMANAGPNTNGSQFFICTIKTDWLDGKHVVFVGHVKEGMDVVKKIESFGSKSGRTSKKIVITDCGQLS TRTRPLEQKLISEEDLAANDILDYKDDDDKV
Tag:	C-Myc/DDK
Purity:	> 80% as determined by SDS-PAGE and Coomassie blue staining
Concentration:	>0.05 µg/µL as determined by microplate BCA method
Labeling Method:	Labeled with [U- ¹³ C ₆ , ¹⁵ N ₄]-L-Arginine and [U- ¹³ C ₆ , ¹⁵ N ₂]-L-Lysine
Buffer:	25 mM Tris-HCl, 100 mM glycine, pH 7.3
Storage:	Store at -80°C. Avoid repeated freeze-thaw cycles.
Stability:	Stable for 3 months from receipt of products under proper storage and handling conditions.
RefSeq:	NP_005720
RefSeq Size:	2213
RefSeq ORF:	621
Synonyms:	Cyp-D; CyP-M; CYP3; CypD
Locus ID:	10105
UniProt ID:	P30405 , A0A024QZS4

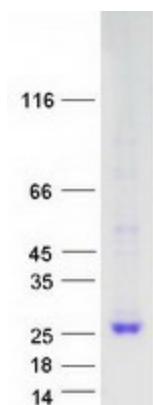


[View online »](#)

Cytogenetics: 10q22.3

Summary: The protein encoded by this gene is a member of the peptidyl-prolyl cis-trans isomerase (PPIase) family. PPIases catalyze the cis-trans isomerization of proline imidic peptide bonds in oligopeptides and accelerate the folding of proteins. This protein is part of the mitochondrial permeability transition pore in the inner mitochondrial membrane. Activation of this pore is thought to be involved in the induction of apoptotic and necrotic cell death. [provided by RefSeq, Jul 2008]

Product images:



Coomassie blue staining of purified PPIF protein (Cat# [TP323397]). The protein was produced from HEK293T cells transfected with PPIF cDNA clone (Cat# [RC223397]) using MegaTran 2.0 (Cat# [TT210002]).