

## Product datasheet for PH323396

### C9orf23 (RPP25L) (NM\_148179) Human Mass Spec Standard

#### Product data:

Product Type:	Mass Spec Standards
Description:	C9orf23 MS Standard C13 and N15-labeled recombinant protein (NP_680545)
Species:	Human
Expression Host:	HEK293
Expression cDNA Clone or AA Sequence:	RC223396
Predicted MW:	17.6 kDa
Protein Sequence:	>RC223396 protein sequence <b>Red</b> =Cloning site <b>Green</b> =Tags(s)  MEHYRKAGSVELPAPSPMPQLPPDTLEMRVRDGSKIRNLLGLALGRLEGG SARHVVFSGSGRAAGKAVSC AEIVKRRV PGLHQLTKLRFLQTEDSWVPASPTGLDPLTVRRHVPVWVLLSRDPLDPNECGYQPPGAPP GLGMPSSSCGPRSRRRARDTRS  <b>TR</b> TRPLEQKLI SEEDLAANDILDYKDDDDKV
Tag:	C-Myc/DDK
Purity:	> 80% as determined by SDS-PAGE and Coomassie blue staining
Concentration:	>0.05 µg/µL as determined by microplate BCA method
Labeling Method:	Labeled with [U- <sup>13</sup> C <sub>6</sub> , <sup>15</sup> N <sub>4</sub> ]-L-Arginine and [U- <sup>13</sup> C <sub>6</sub> , <sup>15</sup> N <sub>2</sub> ]-L-Lysine
Buffer:	25 mM Tris-HCl, 100 mM glycine, pH 7.3
Storage:	Store at -80°C. Avoid repeated freeze-thaw cycles.
Stability:	Stable for 3 months from receipt of products under proper storage and handling conditions.
RefSeq:	<a href="#">NP_680545</a>
RefSeq Size:	1119
RefSeq ORF:	489
Synonyms:	bA296L22.5; C9orf23
Locus ID:	138716
UniProt ID:	<a href="#">Q8N5L8</a>

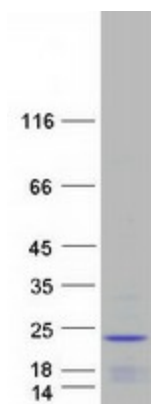


[View online »](#)

Cytogenetics: 9p13.3

**Summary:** This gene encodes a protein that appears to belong to a family of evolutionarily related proteins (DUF78), that may share one or more domains in common. Members of this family are small archaeobacterial proteins with no known function. Alternative splicing has been observed at this locus and two variants, both encoding the same protein, have been identified. [provided by RefSeq, Jul 2008]

**Product images:**



Coomassie blue staining of purified RPP25L protein (Cat# [TP323396]). The protein was produced from HEK293T cells transfected with RPP25L cDNA clone (Cat# [RC223396]) using MegaTran 2.0 (Cat# [TT210002]).