

Product datasheet for PH323392

Placental lactogen (CSH2) (NM_022645) Human Mass Spec Standard

Product data:

| | |
|---------------------------------------|---|
| Product Type: | Mass Spec Standards |
| Description: | CSH2 MS Standard C13 and N15-labeled recombinant protein (NP_072171) |
| Species: | Human |
| Expression Host: | HEK293 |
| Expression cDNA Clone or AA Sequence: | RC223392 |
| Predicted MW: | 13.7 kDa |
| Protein Sequence: | >RC223392 representing NM_022645 Red=Cloning site Green=Tags(s) MAAGSRTSLLLAFALLCLPWLQEAGAVQTVPLSRLFDHAMLQAHRAHQLAIDTYQEFRLEDGSRRTGQIL KQTYSKFDTNSHNHDALLKNYGLLYCFRKDMDKVETFLRMVQCRSVEGSCGF TRTRPLEQKLISEEDLAANDILDYKDDDDKV |
| Tag: | C-Myc/DDK |
| Purity: | > 80% as determined by SDS-PAGE and Coomassie blue staining |
| Concentration: | >0.05 µg/µL as determined by microplate BCA method |
| Labeling Method: | Labeled with [U- 13C6, 15N4]-L-Arginine and [U- 13C6, 15N2]-L-Lysine |
| Buffer: | 25 mM Tris-HCl, 100 mM glycine, pH 7.3 |
| Storage: | Store at -80°C. Avoid repeated freeze-thaw cycles. |
| Stability: | Stable for 3 months from receipt of products under proper storage and handling conditions. |
| RefSeq: | NP_072171 |
| RefSeq Size: | 598 |
| RefSeq ORF: | 366 |
| Synonyms: | CS-2; CSB; GHB1; hCS-B; PL |
| Locus ID: | 1443 |
| UniProt ID: | B1A4H9 |
| Cytogenetics: | 17q23.3 |



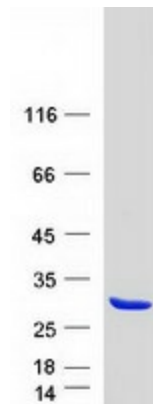
[View online »](#)

Summary:

The protein encoded by this gene is a member of the somatotropin/prolactin family of hormones and plays an important role in growth control. The gene is located at the growth hormone locus on chromosome 17 along with four other related genes in the same transcriptional orientation; an arrangement which is thought to have evolved by a series of gene duplications. Although the five genes share a remarkably high degree of sequence identity, they are expressed selectively in different tissues. Alternative splicing generates additional isoforms of each of the five growth hormones. This particular family member is expressed mainly in the placenta and utilizes multiple transcription initiation sites. Expression of the identical mature proteins for chorionic somatomammotropin hormones 1 and 2 is upregulated during development, while the ratio of 1 to 2 increases by term. Structural and expression differences provide avenues for developmental regulation and tissue specificity. [provided by RefSeq, Jul 2008]

Protein Families:

Secreted Protein

Product images:

Coomassie blue staining of purified CSH2 protein (Cat# [TP323392]). The protein was produced from HEK293T cells transfected with CSH2 cDNA clone (Cat# [RC223392]) using MegaTran 2.0 (Cat# [TT210002]).