

Product datasheet for PH323360

TLL1 (NM_012464) Human Mass Spec Standard

Product data:

Product Type:	Mass Spec Standards
Description:	TLL1 MS Standard C13 and N15-labeled recombinant protein (NP_036596)
Species:	Human
Expression Host:	HEK293
Expression cDNA Clone or AA Sequence:	RC223360
Predicted MW:	114.5 kDa
Protein Sequence:	>RC223360 representing NM_012464 Red=Cloning site Green=Tags(s)

MGLGTLSPRMLVWLVASGIVFYGELWVCAGLDYDYTFDGNEDKTETIDYKDPCKAAVFWGDIALDDEDL
NIFQIDRTIDLTONPFGNLGHTTGGLGDHMSKRGALYQLIDRIRRIGFGLQNNVTKGVPLQFSGQN
EKNRPRAATSRTERIWPGGVIPPYVIGGNFTGSQRAMFKQAMRHWEKHTCVTFIERSDEESYIVFTYRCP
GCCSYVGRNGPQQAISIGKNCDFGIVVHELGHVIGFWHEHTRPDRDNHVTIIRENIQPGQEYNFLKME
PGEVNSLGERYDFDSIMHYARNTFSRGMFLDTILPSRDDNGIRPAIGQRTRL SKGDIAQARKLYRCPACG
ETLQESNGNLSSPGFPNGYPSYTHCIWRVSVTPGEKIVLNFTTMDLYKSSLCWYDYIEVRDGYWRKSPLL
GRFCGDKLPEVLTSTDSRMWIEFRSSSNWVGKFAAVYEAI CGGEIRKNEGQIQSPNYPDDYRPMKECVW
KITVSESYHVGLTFQSFIEIERHDNCAVDYLEVRDGTSENSPLIGRFCGYDKPEDIRSTSNTLWMMKFVSDG
TVNKAGFAANFFKEEDECAKPDRCGCEQRCLNTLGSYQACEPGYELGPDRRSCEAACGGLLTKLNGTIT
TPGWPKYPPNKNVCVQVVAAPTQYRISVKFEFFELGNEVCKYDYVEIWSGLSSESKLHGKFCGAEVPEV
ITSQFNNMRIEFKSDNTVSKKGFKAHFFSDKDECSKDNCGCQHECVNTMGSYMCQCRNGFVLHDNKHDCK
EAECEQKIHSPSGLITSPNWPDKYPSRKECTWEISATPGHRIKLAFFSEFEIEQHQECAYDHLEVF DGETE
KSPILGRLCGNKIPDPLVATGNKMFVRFVSDASVQRKGFQATHSTECGRLKAESKPRDL YSHAQFGDNN
YPGQVDCEWLLVSEGRSLELSFQTFEVEEEADCGDYVELFDGLDSTAVGLGRFCGSGPPEEIIYSIGDS
VLIHFHTDDTINKKGFHIRYKSIRYPDTTHTTK

TRTRPLEQKLI SEEDLAANDILDYKDDDDKV

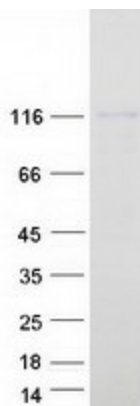
Tag:	C-Myc/DDK
Purity:	> 80% as determined by SDS-PAGE and Coomassie blue staining
Concentration:	>0.05 µg/µL as determined by microplate BCA method
Labeling Method:	Labeled with [U- ¹³ C ₆ , ¹⁵ N ₄]-L-Arginine and [U- ¹³ C ₆ , ¹⁵ N ₂]-L-Lysine
Buffer:	25 mM Tris-HCl, 100 mM glycine, pH 7.3
Storage:	Store at -80°C. Avoid repeated freeze-thaw cycles.



[View online »](#)

Stability:	Stable for 3 months from receipt of products under proper storage and handling conditions.
RefSeq:	NP_036596
RefSeq Size:	6654
RefSeq ORF:	3039
Synonyms:	ASD6; TLL
Locus ID:	7092
UniProt ID:	O43897 , B7ZLW3
Cytogenetics:	4q32.3
Summary:	This gene encodes an astacin-like, zinc-dependent, metalloprotease that belongs to the peptidase M12A family. This protease processes procollagen C-propeptides, such as chordin, pro-biglycan and pro-lysyl oxidase. Studies in mice suggest that this gene plays multiple roles in the development of mammalian heart, and is essential for the formation of the interventricular septum. Allelic variants of this gene are associated with atrial septal defect type 6. Alternatively spliced transcript variants encoding different isoforms have been found for this gene. [provided by RefSeq, Mar 2011]
Protein Families:	Druggable Genome, Protease, Secreted Protein

Product images:



Coomassie blue staining of purified TLL1 protein (Cat# [TP323360]). The protein was produced from HEK293T cells transfected with TLL1 cDNA clone (Cat# [RC223360]) using MegaTran 2.0 (Cat# [TT210002]).