

## Product datasheet for PH323337

### INDOL1 (IDO2) (NM\_194294) Human Mass Spec Standard

#### Product data:

Product Type:	Mass Spec Standards
Description:	IDO2 MS Standard C13 and N15-labeled recombinant protein (NP_919270)
Species:	Human
Expression Host:	HEK293
Expression cDNA Clone or AA Sequence:	RC223337
Predicted MW:	46.9 kDa
Protein Sequence:	>RC223337 representing NM_194294 Red=Cloning site Green=Tags(s)

MLHFHYDTSNKIMEPHRPVKTAVPLSLESYHISEEYGFLLPDSLKELPDHYRPWMEIANKLPQLIDAH  
QLQAHVDKMPLLSCQFLKGHREQLAHLVLSFLTMGYVWQEGEAQPAEVLPRNLALPFVEVSRNLGLPPI  
LVHSDLVLTNWTKKDPDGFLEIGNLETIISFPGGESLHGFILVTALVEKEAVPGIKALVQATNAILQPNQ  
EALLQALQRLRLSIQDITKTLGQMHDYVDPDIFYAGIRIFLSGWKDNPAMPAGLMYEGVSQEPLKYSGGG  
AAQSTVLHAFDEFLLGIRHSKESGDFLYRMRDYMPPSHKAFIEDIHSAPSLRDYILSSGQDHLLTAYNQCV  
QALAEALRSYHITMVTLYLITAAAKAKHGKPNHLPGPPQALKDRGTGGTAVMSFLKSVRDKTLESILHPRG

TRTRPLEQKLI SEEDLAANDILDYKDDDDKV

Tag:	C-Myc/DDK
Purity:	> 80% as determined by SDS-PAGE and Coomassie blue staining
Concentration:	>0.05 µg/µL as determined by microplate BCA method
Labeling Method:	Labeled with [U- <sup>13</sup> C <sub>6</sub> , <sup>15</sup> N <sub>4</sub> ]-L-Arginine and [U- <sup>13</sup> C <sub>6</sub> , <sup>15</sup> N <sub>2</sub> ]-L-Lysine
Buffer:	25 mM Tris-HCl, 100 mM glycine, pH 7.3
Storage:	Store at -80°C. Avoid repeated freeze-thaw cycles.
Stability:	Stable for 3 months from receipt of products under proper storage and handling conditions.
RefSeq:	<u>NP_919270</u>
RefSeq Size:	2294
RefSeq ORF:	1260
Synonyms:	INDOL1
Locus ID:	169355



[View online »](#)

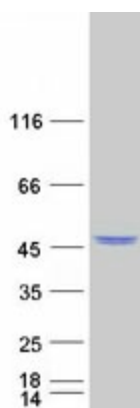
UniProt ID: [Q6ZQW0](#)

Cytogenetics: 8p11.21

Summary: Along with the enzymes encoded by the INDO (MIM 147435) and TDO2 (MIM 191070) genes, the enzyme encoded by the INDOL1 gene metabolizes tryptophan in the kynurenine pathway (Ball et al., 2007 [PubMed 17499941]).[supplied by OMIM, Feb 2011]

Protein Pathways: Metabolic pathways, Tryptophan metabolism

### Product images:



Coomassie blue staining of purified IDO2 protein (Cat# [TP323337]). The protein was produced from HEK293T cells transfected with IDO2 cDNA clone (Cat# [RC223337]) using MegaTran 2.0 (Cat# [TT210002]).