

## Product datasheet for PH323329

### NABC1 (BCAS1) (NM\_003657) Human Mass Spec Standard

#### Product data:

Product Type:	Mass Spec Standards
Description:	BCAS1 MS Standard C13 and N15-labeled recombinant protein (NP_003648)
Species:	Human
Expression Host:	HEK293
Expression cDNA Clone or AA Sequence:	RC223329
Predicted MW:	61.7 kDa
Protein Sequence:	>RC223329 protein sequence Red=Cloning site Green=Tags(s)

MGNQMSVPQRVEDQENEPEAETYQDNASALNGVPPVVSTHTVQHLEEVDLGISVKTDNVATSSPETTEIS  
AVADANGNLGKEAKPEAPAAKSRFFLMLSRPVGRTGDQAADSSLGSVKLDVSSNKAPANKDPSESRTL  
PVAAGPGQDTPGHAPAQDKVLSAARDPTLLPPETGGAGGEAPSKPKDSSFFDKFFKLDKGQEKVPGD  
SQQEAKRAEHQDKVDEVPGLSGQSDDVPAGKDIVDGEKEGEQELGTADCSVPGDPEGLETAKDSSQAAAI  
AENNSIMSFFKTLVSPNKAETKKDPEDTGAEKSPPTTSADLKSDKANFTSQETQGAGKNSKGCNPSGHTQ  
SVTTPEPAKEGTEKESGPTSLPLGKLFWKSVKEDSVPTGAEENVVCEPVEI IKSKEVESALQTVDLNE  
GDAAPEPTEAKLKREESKPRTSLMAFLRQMSVKGDDGITHSEEINGKDSSCQTSDESTKIITPPEPEPTG  
APQKGKEGSSKDKKSAEMNKQKSNKQEAKEPAQCTEQATVDTNSLQNGDKLQKRPEKRQSLGGFFKGL  
GPKRMLDAQVQTDVPSIGPVGKSK

SGP TRTRPLEQKLI SEEDLAANDILDYKDDDDKV

Tag:	C-Myc/DDK
Purity:	> 80% as determined by SDS-PAGE and Coomassie blue staining
Concentration:	>0.05 µg/µL as determined by microplate BCA method
Labeling Method:	Labeled with [U- 13C6, 15N4]-L-Arginine and [U- 13C6, 15N2]-L-Lysine
Buffer:	25 mM Tris-HCl, 100 mM glycine, pH 7.3
Storage:	Store at -80°C. Avoid repeated freeze-thaw cycles.
Stability:	Stable for 3 months from receipt of products under proper storage and handling conditions.
RefSeq:	<a href="#">NP_003648</a>
RefSeq Size:	3475
RefSeq ORF:	1752



[View online »](#)

**Synonyms:** AIBC1; NABC1; PMES-2

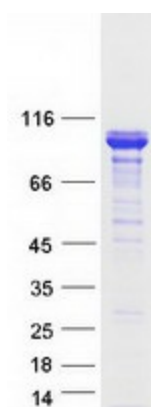
**Locus ID:** 8537

**UniProt ID:** [O75363](#)

**Cytogenetics:** 20q13.2

**Summary:** This gene resides in a region at 20q13 which is amplified in a variety of tumor types and associated with more aggressive tumor phenotypes. Among the genes identified from this region, it was found to be highly expressed in three amplified breast cancer cell lines and in one breast tumor without amplification at 20q13.2. However, this gene is not in the common region of maximal amplification and its expression was not detected in the breast cancer cell line MCF7, in which this region is highly amplified. Although not consistently expressed, this gene is a candidate oncogene. [provided by RefSeq, Apr 2016]

### Product images:



Coomassie blue staining of purified BCAS1 protein (Cat# [TP323329]). The protein was produced from HEK293T cells transfected with BCAS1 cDNA clone (Cat# [RC223329]) using MegaTran 2.0 (Cat# [TT210002]).