

Product datasheet for PH323316

JMJD7-PLA2G4B (NM_005090) Human Mass Spec Standard

Product data:

Product Type:	Mass Spec Standards
Description:	JMJD7 MS Standard C13 and N15-labeled recombinant protein (NP_005081)
Species:	Human
Expression Host:	HEK293
Expression cDNA Clone or AA Sequence:	RC223316
Predicted MW:	113.9 kDa
Protein Sequence:	>RC223316 representing NM_005090 Red=Cloning site Green=Tags(s)

MAEAALEAVRSELREFPAAARELCVPLAVPYLDKPPTPLHFYRDWVCPNRPICIRNALQHPALQKWSLP
YFRATVGSTEVSAVTPDGYADAVRGDRFMMPAERRRPLSFVLDVLEGRAQHPGVLVYVQKQCSNLPSELP
QLLPDLESHVPWASEALGKMPDAVNFWLGEAAVTSLHKDHYENLYCVVSGEKHFLFHPPSDRPFIPYEL
YTPATYQLTEEGTFKVVDEEAMEKAEVSRCLLTVRVLQAHRLPSKDLVTPSDCVTLWLPTACSHRLQT
RTVKNSSSPVWNQSFHFRIRHRLKNMELKVFQDLVTGDDPVL SVLFDAGTLRAGEFRRESFSLSPQGE
GRLEVEFRLQSLADRGEWLVSNGLVARELSCLHVQLEETGDQKSSEHRVQLVVPGSCGPQEASVGTGT
FCFHCPACWEQELSIRLQDAPEEQKAPLSALPSGOVVRVLFPTSQEPLMRVELKKEAGLRELAVRLGFG
PCAEQAFLSRRKQVVAALRQALQLDGDLEDEIPVVAIMATGGGIRAMTSLYGLAGLKLGLLDCVS
YITGASGSTWALANLYEDPEWSQKDLGPTTELLKTQVTKNKLGVLAQSLQRYRQELAERARLGYPCFT
NLWALINEALLHDEPHDHKLSQREALSHGQNPLPIYCALNTKGQSLTTFEFGEWCFSPYEVGFPKYGA
FIPSELFGEFFMGQMKRLPESRICFLEGIWSNLYAANLQDSLWASEPSQFWRWRVNQANLKEQVP
LLKIEEPPSTAGRIAEFFTDLLTWRPLAQATHNFRGLHFHKDYFQHPHFSTWKATTLDGLPNQLTPSEP
HLCLLDVGYLINTSCLPLLQPTRDVLILSLDYNLHGAFQQLQLGRFCQEQGIPFPIIPSPPEEQQR
ECHTFSDPTCPGAPAVLHFPLVSDSFREYSAPGVRRTPEEAAAGEVNLSSSDSPYHYTKVTYSQEDVDKL
LHLTHYNVCNNQEQLLEALRQAVQRRRQRRPH

TRTRPLEQKLISEEDLAANDILDYKDDDDKV

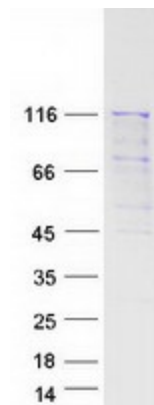
Tag:	C-Myc/DDK
Purity:	> 80% as determined by SDS-PAGE and Coomassie blue staining
Concentration:	>0.05 µg/µL as determined by microplate BCA method
Labeling Method:	Labeled with [U- ¹³ C ₆ , ¹⁵ N ₄]-L-Arginine and [U- ¹³ C ₆ , ¹⁵ N ₂]-L-Lysine
Buffer:	25 mM Tris-HCl, 100 mM glycine, pH 7.3
Storage:	Store at -80°C. Avoid repeated freeze-thaw cycles.



[View online »](#)

Stability:	Stable for 3 months from receipt of products under proper storage and handling conditions.
RefSeq:	NP_005081
RefSeq Size:	3352
RefSeq ORF:	3036
Synonyms:	cPLA2-beta; HsT16992
Locus ID:	8681
UniProt ID:	P0C869 , P0C869-6
Cytogenetics:	15q15.1
Summary:	This locus represents naturally-occurring readthrough transcription between the neighboring jumonji domain containing 7 (JMJD7) and phospholipase A2, group IVB (cytosolic) (PLA2G4B) genes. Readthrough transcripts encode fusion proteins that share amino acid sequence with each individual gene product, including a partial JmjC domain and downstream C2 and phospholipase A2 domains. Alternatively spliced transcript variants have been observed. [provided by RefSeq, Oct 2013]
Protein Pathways:	alpha-Linolenic acid metabolism, Arachidonic acid metabolism, Ether lipid metabolism, Fc epsilon RI signaling pathway, Glycerophospholipid metabolism, GnRH signaling pathway, Linoleic acid metabolism, Long-term depression, MAPK signaling pathway, Metabolic pathways, Vascular smooth muscle contraction, VEGF signaling pathway

Product images:



Coomassie blue staining of purified JMJD7-PLA2G4B protein (Cat# [TP323316]). The protein was produced from HEK293T cells transfected with JMJD7-PLA2G4B cDNA clone (Cat# [RC223316]) using MegaTran 2.0 (Cat# [TT210002]).