

Product datasheet for PH323300

XPF (ERCC4) (NM_005236) Human Mass Spec Standard

Product data:

Product Type:	Mass Spec Standards
Description:	ERCC4 MS Standard C13 and N15-labeled recombinant protein (NP_005227)
Species:	Human
Expression Host:	HEK293
Expression cDNA Clone or AA Sequence:	RC223300
Predicted MW:	104.3 kDa
Protein Sequence:	>RC223300 representing NM_005236 Red=Cloning site Green=Tags(s)

MESGQPARRIAMAPLLEYERQLVLELLDGLVVCARGLGADRLLYHFLQLHCHPACLVLVNTQPAEEE
YFINQLKIEGVEHLPRRVTEITSNSRYEYVTQGGVIFATSRILVDFLTDRI PSDLITGILVYRAHRII
ESCQEAFILRLFRQKNKRGFIKAFDTNAVAFDTGFCHEVERVMRNLFVRKLYLWPRFHVAVNSFLEQHKPE
VVEIHVSMTPTMLAIQTAILDILNACLKELKCHNPSLEVEDLSLENAIGKPFDKTIRHYLDPLWHQLGAK
TKSLVQDLKILRTLQYLSQYDCVTFNLLESRLATEKAFQNSGWLFLDSSTSMFINARARVYHLPDAK
MSKKEKISEKMEIKEGEETKKELVLESNPKWEALTEVLKEIEAENKESEALGGPGQVLICASDDRTCSQL
RDYITLGAEAFLLRLYRKTFEKDSKAEVWVKFRKEDSSKRIRKSHKRPKDPQNKERASTKERTLKKKKR
KLTLTQVMVGKPEEEEEGDVEEGYRREISSPESCPREEIKHEEFDVNLSSDAAFGILKEPLTIIHPLLGC
SDPYALTRVLHEVEPRYVLYDAELTFVRQLEIYRASRPKPLRVYFLIYGGSTEEQRYLTALRKEKEAF
EKLIREKASMVVPEEREGRDETNDLVRGTASADVSTDRKAGGQEQNGTQQSIVVDMREFRSELPSLIH
RRGIDIEPVTLEVGDYILTPEMCVERKISDLIGSLNNGRLYSQCISMSRYKRPVLLIEFDPSPKPSLT
SRGALFQEISSNDISSKLTLTLHFPRRLILWCSPHATAELFEELKQSKPQPDAAALAITADSETLPE
SEKYNPGPQDFLLKMPGVNAKNCRSLMHHVKNI AEL AAL SQDEL TSILGNAANAKQLYDFIHTSFAEVVS
KGKGGK

TRTRPLEQKLI SEEDLAANDILDYKDDDDKV

Tag:	C-Myc/DDK
Purity:	> 80% as determined by SDS-PAGE and Coomassie blue staining
Concentration:	>0.05 µg/µL as determined by microplate BCA method
Labeling Method:	Labeled with [U- ¹³ C ₆ , ¹⁵ N ₄]-L-Arginine and [U- ¹³ C ₆ , ¹⁵ N ₂]-L-Lysine
Buffer:	25 mM Tris-HCl, 100 mM glycine, pH 7.3
Storage:	Store at -80°C. Avoid repeated freeze-thaw cycles.
Stability:	Stable for 3 months from receipt of products under proper storage and handling conditions.



[View online »](#)

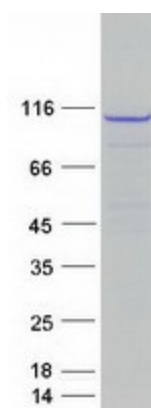
RefSeq:	NP_005227
RefSeq Size:	2751
RefSeq ORF:	2748
Synonyms:	ERCC11; FANCO; RAD1; XFEPS; XPF
Locus ID:	2072
UniProt ID:	Q92889 , A0A1W1GSK9
Cytogenetics:	16p13.12

Summary: The protein encoded by this gene forms a complex with ERCC1 and is involved in the 5' incision made during nucleotide excision repair. This complex is a structure specific DNA repair endonuclease that interacts with EME1. Defects in this gene are a cause of xeroderma pigmentosum complementation group F (XP-F), or xeroderma pigmentosum VI (XP6). [provided by RefSeq, Mar 2009]

Protein Families: Druggable Genome

Protein Pathways: Nucleotide excision repair

Product images:



Coomassie blue staining of purified ERCC4 protein (Cat# [TP323300]). The protein was produced from HEK293T cells transfected with ERCC4 cDNA clone (Cat# [RC223300]) using MegaTran 2.0 (Cat# [TT210002]).