

Product datasheet for PH323295

ABCE1 (NM_002940) Human Mass Spec Standard

Product data:

Product Type:	Mass Spec Standards
Description:	ABCE1 MS Standard C13 and N15-labeled recombinant protein (NP_002931)
Species:	Human
Expression Host:	HEK293
Expression cDNA Clone or AA Sequence:	RC223295
Predicted MW:	67.1 kDa
Protein Sequence:	>RC223295 representing NM_002940 Red=Cloning site Green=Tags(s)

MADKLTRIAIVNHDKCKPKKCRQECKKSCPVVRMGKLCIEVTPQSKIAWISETLCIGCGICIKKCPFGAL
SIVNLPNLEKETTHRYCANAFKLHRLPIPRPGEVLGLVGTNGIGKSTALKILAGKQKPNLKYDDPPDW
QEILTYFRGSELQNYFTKILEDDLKAIIPQYVDQIPKAAKGTVGSILDRKDETKTQAIIVCQQLDLTHLK
ERNVEDLSGGELQRFACAVVCIQKADIFMFDEPSSYLDVKQRLKAAITIRSLINPDRIIVVEHDLVLD
YLSDFICCLYGVPSAYGVVMPFSVREGINIFLDGYVPTENLRFDRDASLVFKVAETANEEVKKMCMYKY
PGMKKKMGFELAIIVAGEFTDSEIMVMLGENGTGKTTFIRMLAGRLKPDEGGEVPLNVSYKPKISPKS
TGSVRQLLHEKIRDAYTHPQFVTDVMKPLQIENIIDQEVQTLSSGGELQRVALALCLGKPADVYLIDEPSA
YLDSEQRLLMAARVVKRFILHAKKTAFFVEHDFIMATYLADRVIIVFDGVPSKNTVANSPTLLAGMKNKFLS
QLEITFRDRPNNYRPRINKLNSIKDVEQKSGNYFFLDD

TRTRPLEQKLISEEDLAANDILDYKDDDDKV

Tag:	C-Myc/DDK
Purity:	> 80% as determined by SDS-PAGE and Coomassie blue staining
Concentration:	>0.05 µg/µL as determined by microplate BCA method
Labeling Method:	Labeled with [U- ¹³ C ₆ , ¹⁵ N ₄]-L-Arginine and [U- ¹³ C ₆ , ¹⁵ N ₂]-L-Lysine
Buffer:	25 mM Tris-HCl, 100 mM glycine, pH 7.3
Storage:	Store at -80°C. Avoid repeated freeze-thaw cycles.
Stability:	Stable for 3 months from receipt of products under proper storage and handling conditions.
RefSeq:	NP_002931
RefSeq Size:	3568
RefSeq ORF:	1797



[View online »](#)

Synonyms: ABC38; OABP; RLI; RLI1; RNASEL1; RNASELI; RNS4I

Locus ID: 6059

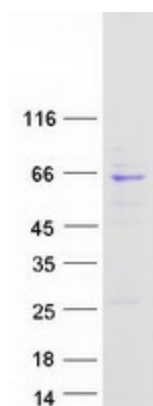
UniProt ID: [P61221](#)

Cytogenetics: 4q31.21

Summary: The protein encoded by this gene is a member of the superfamily of ATP-binding cassette (ABC) transporters. ABC proteins transport various molecules across extra- and intra-cellular membranes. ABC genes are divided into seven distinct subfamilies (ABC1, MDR/TAP, MRP, ALD, OABP, GCN20, White). This protein is a member of the OABP subfamily. Alternatively referred to as the RNase L inhibitor, this protein functions to block the activity of ribonuclease L. Activation of ribonuclease L leads to inhibition of protein synthesis in the 2-5A/RNase L system, the central pathway for viral interferon action. Two transcript variants encoding the same protein have been found for this gene. [provided by RefSeq, Jul 2008]

Protein Families: Druggable Genome

Product images:



Coomassie blue staining of purified ABCE1 protein (Cat# [TP323295]). The protein was produced from HEK293T cells transfected with ABCE1 cDNA clone (Cat# [RC223295]) using MegaTran 2.0 (Cat# [TT210002]).