

Product datasheet for PH323205

MMAA (NM_172250) Human Mass Spec Standard

Product data:

Product Type:	Mass Spec Standards
Description:	MMAA MS Standard C13 and N15-labeled recombinant protein (NP_758454)
Species:	Human
Expression Host:	HEK293
Expression cDNA Clone or AA Sequence:	RC223205
Predicted MW:	39 kDa
Protein Sequence:	>RC223205 representing NM_172250 Red=Cloning site Green=Tags(s)
	MPMLLPHPHQHFLKGLLRAPFRCYHFIFHSSTHLGSGIPCAQPFNSLGLHCTKWMLLSDGLKRKLCVQTT LKDHTEGLSDKEQRFVDKLYTGLIQQQRACLAEAITLVESTHSRKKELAQVLLQKVLLYHREQEQSNGK PLAFRVGLSGPPGAGKSTFIEYFGKMLTERGHKLSVLAVDPSSCTSGGSLLGDKTRMTELSRDMNAYIRP SPTRGTLGGVTRTTNEAILLCEGAGYDIIIL IETVGVGQSEFAVADMVDMFVLLLPPAGGDELQGIKRGII EMADLVAVTKSDGDLIVPARRIQAEYVSALKLLRKRSQVWPKVIRI SARSGEGISEMWDKMKDFQDLML ASGELTAKRRKQQKVMMWNLIQESVLEHFRTHPTVREQIPLLEQKVLIGALSPGLAADFLLKAFKSRD
	TRTRPLEQKLI SEEDLAANDILDYKDDDDKV
Tag:	C-Myc/DDK
Purity:	> 80% as determined by SDS-PAGE and Coomassie blue staining
Concentration:	>0.05 µg/µL as determined by microplate BCA method
Labeling Method:	Labeled with [U- ¹³ C ₆ , ¹⁵ N ₄]-L-Arginine and [U- ¹³ C ₆ , ¹⁵ N ₂]-L-Lysine
Buffer:	25 mM Tris-HCl, 100 mM glycine, pH 7.3
Storage:	Store at -80°C. Avoid repeated freeze-thaw cycles.
Stability:	Stable for 3 months from receipt of products under proper storage and handling conditions.
RefSeq:	NP_758454
RefSeq Size:	1473
RefSeq ORF:	1254
Synonyms:	cbIA
Locus ID:	166785



[View online »](#)

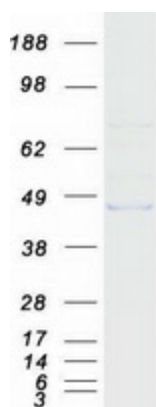
UniProt ID: [Q8IVH4](#)

Cytogenetics: 4q31.21

Summary: The protein encoded by this gene is involved in the translocation of cobalamin into the mitochondrion, where it is used in the final steps of adenosylcobalamin synthesis. Adenosylcobalamin is a coenzyme required for the activity of methylmalonyl-CoA mutase. Defects in this gene are a cause of methylmalonic aciduria. [provided by RefSeq, Jul 2008]

Protein Families: Druggable Genome

Product images:



Coomassie blue staining of purified MMAA protein (Cat# [TP323205]). The protein was produced from HEK293T cells transfected with MMAA cDNA clone (Cat# [RC223205]) using MegaTran 2.0 (Cat# [TT210002]).