

## Product datasheet for PH323202

### PSPC1 (NM\_001042414) Human Mass Spec Standard

#### Product data:

|                                       |  |
|---------------------------------------|--|
| Product Type:                         | Mass Spec Standards  |
| Description:                          | PSPC1 MS Standard C13 and N15-labeled recombinant protein (NP_001035879)   |
| Species:                              | Human  |
| Expression Host:                      | HEK293   |
| Expression cDNA Clone or AA Sequence: | RC223202   |
| Predicted MW:                         | 58.6 kDa   |
| Protein Sequence:                     | >RC223202 representing NM_001042414<br>Red=Cloning site Green=Tags(s)<br><br>MMLRGNLKQVRIEKNPARLRALESVAGESEPAAMALALAGEPAPPAPAPPEDHPDEEMGFTIDIKSF<br>LKPGEKTYTQRCRLFVGNLPTDITEEDFKRLFERYGEPSEVFINRDRGFGRIRLESRTLAETAKAELDGT<br>ILKSRPLRIRFATHGAALTVKNLSPVVSNELLEQAFSQFGPVEKAVVVVDDRGRATGKGFVEFAAKPPAR<br>KALERCGDGAFLLTTTPRPVIVEPMEQFDEEDGLPEKLMQKTQQYHKEREQPPRFAQPGTFEFYASRWK<br>ALDEMEKQQREQVDRNIREAKEKLEAEMEAAARHEHQLMLMRQDLMRRQEELRRLEELRNQELQKRKQIQL<br>RHEEEHRRREEEMIRHREQEELRRQEGFKPNYMNREQEMRMGDMGPRGAINMGDAFSPAPAGNQGPPP<br>MMGMNMNRATIPGPPMGPGPAMGPEGAANMGTPMMPDNGAVHNDRFPPQPPSQMGSPMGSRTGSETPQA<br>PMSGVGPVSGGPGGFRGSQGGNFEGPNKRRRY<br><br>TRTRPLEQKLISEEDLAANDILDYKDDDDKV |
| Tag:                                  | C-Myc/DDK  |
| Purity:                               | > 80% as determined by SDS-PAGE and Coomassie blue staining  |
| Concentration:                        | >0.05 µg/µL as determined by microplate BCA method   |
| Labeling Method:                      | Labeled with [U- 13C6, 15N4]-L-Arginine and [U- 13C6, 15N2]-L-Lysine   |
| Buffer:                               | 25 mM Tris-HCl, 100 mM glycine, pH 7.3   |
| Storage:                              | Store at -80°C. Avoid repeated freeze-thaw cycles.   |
| Stability:                            | Stable for 3 months from receipt of products under proper storage and handling conditions.   |
| RefSeq:                               | <u>NP_001035879</u>  |
| RefSeq Size:                          | 2077   |
| RefSeq ORF:                           | 1569   |



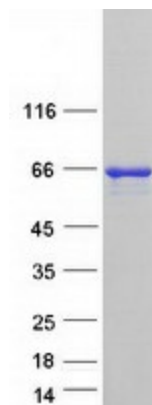
[View online »](#)

**Synonyms:** PSP1  
**Locus ID:** 55269  
**UniProt ID:** [Q8WXF1](#)  
**Cytogenetics:** 13q12.11

**Summary:** This gene encodes a nucleolar protein that localizes to punctate subnuclear structures that occur close to splicing speckles, known as paraspeckles. These paraspeckles are composed of RNA-protein structures that include a non-coding RNA, NEAT1/Men epsilon/beta, and the Drosophila Behavior Human Splicing family of proteins, which include the product of this gene and the P54NRB/NONO and PSF/SFPQ proteins. Paraspeckles may function in the control of gene expression via an RNA nuclear retention mechanism. The protein encoded by this gene is found in paraspeckles in transcriptionally active cells, but it localizes to unique cap structures at the nucleolar periphery when RNA polymerase II transcription is inhibited, or during telophase. Alternative splicing of this gene results in multiple transcript variants. A related pseudogene, which is also located on chromosome 13, has been identified. [provided by RefSeq, Aug 2011]

**Protein Families:** Transcription Factors

### Product images:



Coomassie blue staining of purified PSPC1 protein (Cat# [TP323202]). The protein was produced from HEK293T cells transfected with PSPC1 cDNA clone (Cat# [RC223202]) using MegaTran 2.0 (Cat# [TT210002]).