

Product datasheet for PH323189

ASS1 (NM_000050) Human Mass Spec Standard

Product data:

Product Type:	Mass Spec Standards
Description:	ASS1 MS Standard C13 and N15-labeled recombinant protein (NP_000041)
Species:	Human
Expression Host:	HEK293
Expression cDNA Clone or AA Sequence:	RC223189
Predicted MW:	46.5 kDa
Protein Sequence:	>RC223189 protein sequence Red=Cloning site Green=Tags(s)
	MSSKGSVVLAYSGLDTSCILVWLKEQGYDVIAYLANIGQKEDFEEARKKALKLGAKKVFIEDVSREFVE EFIWPAIQSSALYEDRYLLGTSLARPCIARKQVEIAQREGAKYVSHGATGKGNQVRFELSCYSLAPQIK VIAPWRMPEFYNRFKGRNDLMEYAKQHGIPIPVTPKNPWSMDENLMHISYEAGILENPKNQAPPLYTKT QDPAKAPNTPDILEIEFKKGVVKVTNVKDGTTHTQTSLELFMYLNEVAGKHGVRIDIVENRFIGMKS RG IYETPAGTILYHAHLDIEAFTMDREVRKIKQGLGLKFAELVYTGFWHSPECFVVRHICIAKSQERVEGKVQ VSVLKGQVYILGRESPLSLYNEELVSMNVQGDYEPTDATGFININSLRLKEYHRLQSKVTAK
	TRTRPLEQKLI SEEDLAANDILDYKDDDDKV
Tag:	C-Myc/DDK
Purity:	> 80% as determined by SDS-PAGE and Coomassie blue staining
Concentration:	>0.05 µg/µL as determined by microplate BCA method
Labeling Method:	Labeled with [U- ¹³ C ₆ , ¹⁵ N ₄]-L-Arginine and [U- ¹³ C ₆ , ¹⁵ N ₂]-L-Lysine
Buffer:	25 mM Tris-HCl, 100 mM glycine, pH 7.3
Storage:	Store at -80°C. Avoid repeated freeze-thaw cycles.
Stability:	Stable for 3 months from receipt of products under proper storage and handling conditions.
RefSeq:	<u>NP_000041</u>
RefSeq Size:	1863
RefSeq ORF:	1236
Synonyms:	ASS; CTLN1
Locus ID:	445



[View online »](#)

UniProt ID: [P00966](#), [Q5T6L4](#)

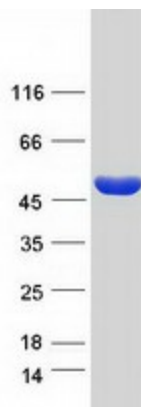
Cytogenetics: 9q34.11

Summary: The protein encoded by this gene catalyzes the penultimate step of the arginine biosynthetic pathway. There are approximately 10 to 14 copies of this gene including the pseudogenes scattered across the human genome, among which the one located on chromosome 9 appears to be the only functional gene for argininosuccinate synthetase. Mutations in the chromosome 9 copy of this gene cause citrullinemia. Two transcript variants encoding the same protein have been found for this gene. [provided by RefSeq, Aug 2012]

Protein Families: Druggable Genome

Protein Pathways: Alanine, aspartate and glutamate metabolism, Arginine and proline metabolism, Metabolic pathways

Product images:



Coomassie blue staining of purified ASS1 protein (Cat# [TP323189]). The protein was produced from HEK293T cells transfected with ASS1 cDNA clone (Cat# [RC223189]) using MegaTran 2.0 (Cat# [TT210002]).