

## Product datasheet for PH323168

### Uroplakin II (UPK2) (NM\_006760) Human Mass Spec Standard

#### Product data:

Product Type:	Mass Spec Standards
Description:	UPK2 MS Standard C13 and N15-labeled recombinant protein (NP_006751)
Species:	Human
Expression Host:	HEK293
Expression cDNA Clone or AA Sequence:	RC223168
Predicted MW:	19.4 kDa
Protein Sequence:	>RC223168 protein sequence <b>Red</b> =Cloning site <b>Green</b> =Tags(s)  MAPLLPIRTLPLILILLALLSPGAADFNISSLSGLLSPALTESLLVALPPCHLTGGNATLMVRRANDSKV VTSSFVPPCRGRRELVSVDGAGFTVTRLSAYQVTNLVPGTKFYISYLVKKGATESSREIPMSTLPR RNMESIGLGMARTGGMVVITVLLSVAMFLLVLGFIIALALGSRK  <b>TR</b> TRPLEQKLISEEDLAANDILDYKDDDDKV
Tag:	C-Myc/DDK
Purity:	> 80% as determined by SDS-PAGE and Coomassie blue staining
Concentration:	>0.05 µg/µL as determined by microplate BCA method
Labeling Method:	Labeled with [U- 13C6, 15N4]-L-Arginine and [U- 13C6, 15N2]-L-Lysine
Buffer:	25 mM Tris-HCl, 100 mM glycine, pH 7.3
Storage:	Store at -80°C. Avoid repeated freeze-thaw cycles.
Stability:	Stable for 3 months from receipt of products under proper storage and handling conditions.
RefSeq:	<a href="#">NP_006751</a>
RefSeq Size:	947
RefSeq ORF:	552
Synonyms:	UP2; UPII
Locus ID:	7379
UniProt ID:	<a href="#">O00526</a>



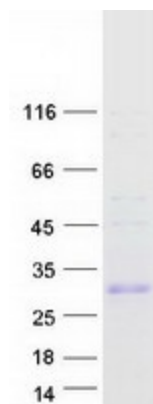
[View online »](#)

**Cytogenetics:** 11q23.3

**Summary:** This gene encodes one of the proteins of the highly conserved urothelium-specific integral membrane proteins of the asymmetric unit membrane which forms urothelium apical plaques in mammals. The asymmetric unit membrane is believed to strengthen the urothelium by preventing cell rupture during bladder distention. The encoded protein is expressed in the peripheral blood of bladder cancer patients with transitional cell carcinomas. [provided by RefSeq, Sep 2009]

**Protein Families:** Transmembrane

### Product images:



Coomassie blue staining of purified UPK2 protein (Cat# [TP323168]). The protein was produced from HEK293T cells transfected with UPK2 cDNA clone (Cat# [RC223168]) using MegaTran 2.0 (Cat# [TT210002]).