

Product datasheet for PH323154

HOMER2 (NM_199330) Human Mass Spec Standard

Product data:

Product Type:	Mass Spec Standards
Description:	HOMER2 MS Standard C13 and N15-labeled recombinant protein (NP_955362)
Species:	Human
Expression Host:	HEK293
Expression cDNA Clone or AA Sequence:	RC223154
Predicted MW:	40.4 kDa
Protein Sequence:	>RC223154 representing NM_199330 Red=Cloning site Green=Tags(s) MGEQPIFTTRAHVQIDPNTKKNWMPASKQAVTVSYFYDVTRNSYRIISVDGAKVIINSTITPNMTFTKT SQKFGQWADSRANTVFGLGFSSEQQLTKFAEKQEVKEAAKIAKDKTQEKIETSSNHSQESGRETPSSTQ ASSVNGTDDEKASHAGPANTHLKSENDKLIKIALTQSAANYKWEIQLTLRESNARLTTALQESAASVEQ WKRQFSICRDENDRLRNKIDEEEQCEINREKEKNTQLKRRIEELAEELREKETELKDLRKQSEIIPQL MSECEYVSEKLEAAERDQNLEDKVRSLKTDIEESKYRQRHLKVELKSFLEVLDGKIDDLHDFRRGLSKL GTDN TRTRPLEQKLISEEDLAANDILDYKDDDDKV
Tag:	C-Myc/DDK
Purity:	> 80% as determined by SDS-PAGE and Coomassie blue staining
Concentration:	>0.05 µg/µL as determined by microplate BCA method
Labeling Method:	Labeled with [U- ¹³ C ₆ , ¹⁵ N ₄]-L-Arginine and [U- ¹³ C ₆ , ¹⁵ N ₂]-L-Lysine
Buffer:	25 mM Tris-HCl, 100 mM glycine, pH 7.3
Storage:	Store at -80°C. Avoid repeated freeze-thaw cycles.
Stability:	Stable for 3 months from receipt of products under proper storage and handling conditions.
RefSeq:	NP_955362
RefSeq Size:	2005
RefSeq ORF:	1062
Synonyms:	ACPD; CPD; DFNA68; HOMER-2; VESL-2
Locus ID:	9455



[View online »](#)

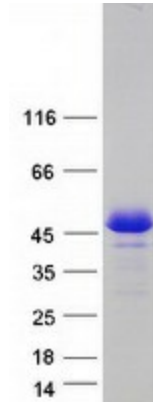
UniProt ID: [Q9NSB8](#)

Cytogenetics: 15q25.2

Summary: This gene encodes a member of the homer family of dendritic proteins. Members of this family regulate group 1 metabotropic glutamate receptor function. The encoded protein is a postsynaptic density scaffolding protein. Alternative splicing results in multiple transcript variants. Two related pseudogenes have been identified on chromosome 14. [provided by RefSeq, Jun 2011]

Protein Families: Druggable Genome

Product images:



Coomassie blue staining of purified HOMER2 protein (Cat# [TP323154]). The protein was produced from HEK293T cells transfected with HOMER2 cDNA clone (Cat# [RC223154]) using MegaTran 2.0 (Cat# [TT210002]).