

Product datasheet for PH323128

PRSS16 (NM_005865) Human Mass Spec Standard

Product data:

Product Type:	Mass Spec Standards
Description:	PRSS16 MS Standard C13 and N15-labeled recombinant protein (NP_005856)
Species:	Human
Expression Host:	HEK293
Expression cDNA Clone or AA Sequence:	RC223128
Predicted MW:	54.9 kDa
Protein Sequence:	>RC223128 representing NM_005865 Red=Cloning site Green=Tags(s)

MAVWLAQWLGPLLLVSLWGLLAPASLLRRLGEHIQQFQESSAQLGLSLGPGAAALPKVGVLEQLLDPFN
VSDRRSFLQRYWVNDQHWVGDGPIFLHLGGEGSLGPGSVMRGHPAALAPAWGALVISLEHRFYGLSIPA
GGLEMAQLRFLSSRLALADVVSARLALSRLFNISSSSPWICFGGSYAGSLAAWARLKFPHLIFASVASSA
PVRAVLDFSEYNDVVSRLMSTAIGGSLECRAAVSVAFAEVERRLRSGGAAQAALRTELSACGPLGRAEN
QAELLGALQALVGGVVQYDGTGAPLSVRQLCGLLGGGNGRSHSTPYCGLRRAVQIVLHSLGQKCLSFS
RAETVAQLRSTEPQLSGVGDQWLYQCTEFYVTCENPRCPFSQLPALPSQLDLCEQVFGLSALSVAQ
AVAQTNSYYGGQTPGANKVLFVNGDTPWHVLSVTQALGSSESTLLIRTGSHCLDMAPERPSDPSLRLG
RQNIFFQLQTLWLKAKESQIKGEV

TRTRPLEQKLI SEEDLAANDILDYKDDDDKV

Tag:	C-Myc/DDK
Purity:	> 80% as determined by SDS-PAGE and Coomassie blue staining
Concentration:	>0.05 µg/µL as determined by microplate BCA method
Labeling Method:	Labeled with [U- ¹³ C ₆ , ¹⁵ N ₄]-L-Arginine and [U- ¹³ C ₆ , ¹⁵ N ₂]-L-Lysine
Buffer:	25 mM Tris-HCl, 100 mM glycine, pH 7.3
Storage:	Store at -80°C. Avoid repeated freeze-thaw cycles.
Stability:	Stable for 3 months from receipt of products under proper storage and handling conditions.
RefSeq:	NP_005856
RefSeq Size:	2722
RefSeq ORF:	1542



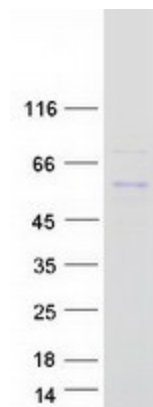
[View online »](#)

Synonyms: TSSP
Locus ID: 10279
UniProt ID: [Q9NQE7](#)
Cytogenetics: 6p22.1

Summary: This gene encodes a serine protease expressed exclusively in the thymus. It is thought to play a role in the alternative antigen presenting pathway used by cortical thymic epithelial cells during the positive selection of T cells. The gene is found in the large histone gene cluster on chromosome 6, near the major histocompatibility complex (MHC) class I region. A second transcript variant has been described, but its full length nature has not been determined. [provided by RefSeq, Jul 2008]

Protein Families: Druggable Genome, Protease, Transmembrane

Product images:



Coomassie blue staining of purified PRSS16 protein (Cat# [TP323128]). The protein was produced from HEK293T cells transfected with PRSS16 cDNA clone (Cat# [RC223128]) using MegaTran 2.0 (Cat# [TT210002]).