

Product datasheet for PH323105

KLHL31 (NM_001003760) Human Mass Spec Standard

Product data:

Product Type:	Mass Spec Standards
Description:	KLHL31 MS Standard C13 and N15-labeled recombinant protein (NP_001003760)
Species:	Human
Expression Host:	HEK293
Expression cDNA Clone or AA Sequence:	RC223105
Predicted MW:	70.1 kDa
Protein Sequence:	>RC223105 representing NM_001003760 Red=Cloning site Green=Tags(s)

MAPKKKIVKKNKGDINEMTIIVEDSPLNKLNALNGLLEGNGLSKISSSELTASYGPNLLEGLSKMRQEN
FLCDLVIGTKTKSFDVHKSVASCSEYFYNILKKDPSIQRVLDNDISPLGLATVIAYAYTGKLTLSLYTI
GSIISAAYVLQIHTLVKMCSDFLIREMSVENCMYVNVNIAETYSLNKAKAAAQKFIRDNFLEAESDQFMK
LTFEQINELLIDDDLQLPSEIVAFQIAMKWLEFDQKRVKYAADLLSNIRFGTISAQDLVNYVQSVPRMMQ
DADCHRLLDVAMNYHLLPYHQNTLQSRRTIRGGCRVLVTGGPRPGLTEKSLSRDILYRDPENGWSKLTE
MPAKSFNQCVAVMDGFLYVAGGEDQNDARNQAKHAVSNFCRYDPRFNTWIHLASMNQKRTHFSLSVFNGL
VYAAGGRNAEGLASLECYVPSTNQWQPKTPLEVARCCHASAVADGRVLVTGGYIANAYSRSVCAYDPAS
DSWQELPNLSTPRGWCAVTLSDRVYVMGGSQLGPRGERVDVLTVECYSPTATGQWSYAAPLQVGVSTAGV
SALHGRAYLVGGWNEGEKKYKCKIQCFPELNEWTEDELPEATVGVSCCTL SMPNNVTRESRASSVSSV
PVSI

TRTRPLEQKLI SEEDLAANDILDYKDDDDKV

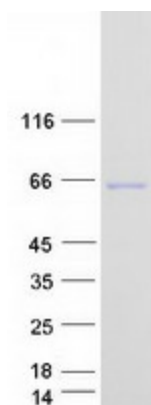
Tag:	C-Myc/DDK
Purity:	> 80% as determined by SDS-PAGE and Coomassie blue staining
Concentration:	>0.05 µg/µL as determined by microplate BCA method
Labeling Method:	Labeled with [U- 13C6, 15N4]-L-Arginine and [U- 13C6, 15N2]-L-Lysine
Buffer:	25 mM Tris-HCl, 100 mM glycine, pH 7.3
Storage:	Store at -80°C. Avoid repeated freeze-thaw cycles.
Stability:	Stable for 3 months from receipt of products under proper storage and handling conditions.
RefSeq:	NP_001003760
RefSeq Size:	1905



[View online »](#)

RefSeq ORF:	1902
Synonyms:	bA345L23.2; BKLHD6; KBTBD1; KLHL
Locus ID:	401265
UniProt ID:	Q9H511
Cytogenetics:	6p12.1
Summary:	Transcriptional repressor in MAPK/JNK signaling pathway to regulate cellular functions. Overexpression inhibits the transcriptional activities of both the TPA-response element (TRE) and serum response element (SRE).[UniProtKB/Swiss-Prot Function]
Protein Families:	Transmembrane

Product images:



Coomassie blue staining of purified KLHL31 protein (Cat# [TP323105]). The protein was produced from HEK293T cells transfected with KLHL31 cDNA clone (Cat# [RC223105]) using MegaTran 2.0 (Cat# [TT210002]).