

Product datasheet for PH323099

WTAP (NM_152858) Human Mass Spec Standard

Product data:

Product Type:	Mass Spec Standards
Description:	WTAP MS Standard C13 and N15-labeled recombinant protein (NP_690597)
Species:	Human
Expression Host:	HEK293
Expression cDNA Clone or AA Sequence:	RC223099
Predicted MW:	17.6 kDa
Protein Sequence:	>RC223099 representing NM_152858 Red=Cloning site Green=Tags(s) MTNEEPLPKKVRLSETDFKVMARDELILRWKQYEAYVQALEGKYTDLNSNDVTGLRESEEKLGKQQQESA RRENILVMRLATKEQEMQECTTQIQYLKQVQQPSVAQLRSTMVDPAINLFFLKMKGELEQTKDKLEQAQN ELSAWKFTPDR TRTRPLEQKLISEEDLAANDILDYKDDDDKV
Tag:	C-Myc/DDK
Purity:	> 80% as determined by SDS-PAGE and Coomassie blue staining
Concentration:	>0.05 µg/µL as determined by microplate BCA method
Labeling Method:	Labeled with [U- 13C6, 15N4]-L-Arginine and [U- 13C6, 15N2]-L-Lysine
Buffer:	25 mM Tris-HCl, 100 mM glycine, pH 7.3
Storage:	Store at -80°C. Avoid repeated freeze-thaw cycles.
Stability:	Stable for 3 months from receipt of products under proper storage and handling conditions.
RefSeq:	<u>NP_690597</u>
RefSeq Size:	1742
RefSeq ORF:	453
Synonyms:	Mum2
Locus ID:	9589
UniProt ID:	<u>Q15007</u>



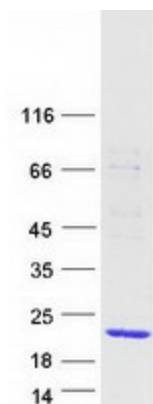
[View online »](#)

Cytogenetics: 6q25.3

Summary: The Wilms tumor suppressor gene WT1 appears to play a role in both transcriptional and posttranscriptional regulation of certain cellular genes. This gene encodes a WT1-associating protein, which is a ubiquitously expressed nuclear protein. Like WT1 protein, this protein is localized throughout the nucleoplasm as well as in speckles and partially colocalizes with splicing factors. Alternative splicing of this gene results in several transcript variants encoding three different isoforms. [provided by RefSeq, Jul 2012]

Protein Families: Druggable Genome

Product images:



Coomassie blue staining of purified WTAP protein (Cat# [TP323099]). The protein was produced from HEK293T cells transfected with WTAP cDNA clone (Cat# [RC223099]) using MegaTran 2.0 (Cat# [TT210002]).