

Product datasheet for PH323064

MLX (NM_198205) Human Mass Spec Standard

Product data:

Product Type:	Mass Spec Standards
Description:	MLX MS Standard C13 and N15-labeled recombinant protein (NP_937848)
Species:	Human
Expression Host:	HEK293
Expression cDNA Clone or AA Sequence:	RC223064
Predicted MW:	24.7 kDa
Protein Sequence:	>RC223064 representing NM_198205 Red=Cloning site Green=Tags(s) MTEPGASPEDPWVKVEYAYSNSLDPDDESDYHQEAYKESYKDRRRRAHTQAEQKRRDAIKRGYDDLQT IVPTCQQQDFSIGSQKLSKAIIVLQKTIDYIQFLHKEKKKQEEVSTLRKDV TALKIMKVNYEQIVKAHQD NPHEGEDQVSDQVKFNVFQGIMDSLFQSFNASISVASFQELSACVFSWIEEHCKPQTLREIVIGVLHQLK NQLY TRTRPLEQKLI SEEDLAANDILDYKDDDDKV
Tag:	C-Myc/DDK
Purity:	> 80% as determined by SDS-PAGE and Coomassie blue staining
Concentration:	>0.05 µg/µL as determined by microplate BCA method
Labeling Method:	Labeled with [U- 13C6, 15N4]-L-Arginine and [U- 13C6, 15N2]-L-Lysine
Buffer:	25 mM Tris-HCl, 100 mM glycine, pH 7.3
Storage:	Store at -80°C. Avoid repeated freeze-thaw cycles.
Stability:	Stable for 3 months from receipt of products under proper storage and handling conditions.
RefSeq:	NP_937848
RefSeq Size:	2316
RefSeq ORF:	642
Synonyms:	bHLHd13; MAD7; MXD7; TCFL4; TF4
Locus ID:	6945
UniProt ID:	Q9UH92



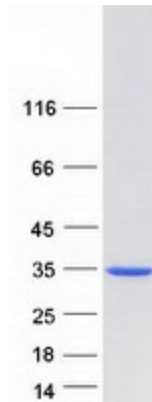
[View online »](#)

Cytogenetics: 17q21.2

Summary: The product of this gene belongs to the family of basic helix-loop-helix leucine zipper (bHLH-Zip) transcription factors. These factors form heterodimers with Mad proteins and play a role in proliferation, determination and differentiation. This gene product may act to diversify Mad family function by its restricted association with a subset of the Mad family of transcriptional repressors, namely, Mad1 and Mad4. Alternatively spliced transcript variants encoding different isoforms have been identified for this gene. [provided by RefSeq, Jul 2008]

Protein Families: Druggable Genome, Transcription Factors

Product images:



Coomassie blue staining of purified MLX protein (Cat# [TP323064]). The protein was produced from HEK293T cells transfected with MLX cDNA clone (Cat# [RC223064]) using MegaTran 2.0 (Cat# [TT210002]).