

Product datasheet for PH322989

ABL2 (NM_001100108) Human Mass Spec Standard

Product data:

Product Type:	Mass Spec Standards
Description:	ABL2 MS Standard C13 and N15-labeled recombinant protein (NP_001093578)
Species:	Human
Expression Host:	HEK293
Expression cDNA Clone or AA Sequence:	RC222989
Predicted MW:	126.5 kDa
Protein Sequence:	>RC222989 representing NM_001100108 Red=Cloning site Green=Tags(s)

MVLGTVLLPPNSYGRDQDTS LCCLCTEASESALPDLTDHFASCVEDGFEGDKTGGSSPEALHRPYGCDVE
PQALNEAIRWSSKENLLGATESDPNLFVALYDFVASGDNTLSITKGEKLRVLYGNQNGEWSERVSKNGQG
WVPSNYITPVNSLEKHSWYHGPVSRSAEYLLSSLINGSFLVRESESSPGQLSISLRYEGRVYHYRINTT
ADGKVVYTAESRFSTLAELVHHHSTVADGLVTTLHYPAPKCNKPTVYGVSPIDHKWEMERTDITMKHKL
GGQYGEVYVGVWKKYSLTVAVKTLKEDTMEVEEFLKEAAMKEIKHPNLVQLLVGCTLEPPFYIVTEYMP
YGNLLDYLRECNREEVTAVLLYMATQISSAMEYLEKKNFIHRDLAARNCLVGENHVVKVADFLSRLMT
GDTYTAHAGAKFPIKWTAPESLAYNTFSIKSDVWAFGVLLWEIATYGMSPYPGIDLQVYDLEKGYRME
QPEGCPKVVYELMRACWKWSPADRPFAETHQAFETMFHDSSISEEVAEELGRAASSSSVYPYLPRLPIL
PSKTRTLKKQVENKENIEGAQDATENSASSLAPGFIIRGAQASSGSPALPRKQRDKSPSSLEDAKETCFT
RDRKGGFFSSFMKRNAPTPPKRSSSFREMNQPHKKYELTGNFSSVASLQHADGFSFPAQQEANLVPP
KCYGGSFAQRNLCNDGGGGGGSGTAGGGWSGITGFFTPRLIKKTLGLRAGKPTASDDTSKPFPRSNSTS
SMSSGLPEQDRMAMTLPRNCQRSKLQLERTVSTSSQPEENVDRANDMLPKKSEESAAPSRERPKAKLLPR
GATALPLRTPSGDLAITEKDPGPGVAGVAAAPKGEKNGGARLGMAGVPEDGEQPGWSPAKAAPVLP
THNHKVPVLI SPTLKHTPADVQLIGTDSQGNKFKLLSEHQVTS SSGDKDRPRRVKPKCAPPPVPMRLQ
PSICSDPTEEPTALTAGQSTSETQEGGKKAALGAVPISGKAGRPVMPVPLPTSSISPAKMANGTAGT
KVALRKTQAAEKISADKISKEALLECADLLSSALTEPVNSQLVDTGHQLLDYCSGYVDCIPQTRNKFA
FREAVSKLELSLQELQVSSAAAGVPGTNPVNLNLLSCVQEISDVVQR

TRTRPLEQKLISEEDLAANDILDYKDDDDKV

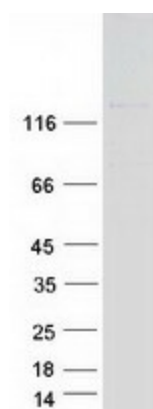
Tag:	C-Myc/DDK
Purity:	> 80% as determined by SDS-PAGE and Coomassie blue staining
Concentration:	>0.05 µg/µL as determined by microplate BCA method
Labeling Method:	Labeled with [U- ¹³ C ₆ , ¹⁵ N ₄]-L-Arginine and [U- ¹³ C ₆ , ¹⁵ N ₂]-L-Lysine
Buffer:	25 mM Tris-HCl, 100 mM glycine, pH 7.3



[View online »](#)

Storage:	Store at -80°C. Avoid repeated freeze-thaw cycles.
Stability:	Stable for 3 months from receipt of products under proper storage and handling conditions.
RefSeq:	NP_001093578
RefSeq Size:	11927
RefSeq ORF:	3501
Synonyms:	ABLL; ARG; FLJ22224; FLJ31718; FLJ41441
Locus ID:	27
UniProt ID:	P42684
Cytogenetics:	1q25.2
Summary:	This gene encodes a member of the Abelson family of nonreceptor tyrosine protein kinases. The protein is highly similar to the c-abl oncogene 1 protein, including the tyrosine kinase, SH2 and SH3 domains, and it plays a role in cytoskeletal rearrangements through its C-terminal F-actin- and microtubule-binding sequences. This gene is expressed in both normal and tumor cells, and is involved in translocation with the ets variant 6 gene in leukemia. Multiple alternatively spliced transcript variants encoding different protein isoforms have been found for this gene. [provided by RefSeq, Nov 2009]
Protein Families:	Druggable Genome, Protein Kinase
Protein Pathways:	ErbB signaling pathway, Viral myocarditis

Product images:



Coomassie blue staining of purified ABL2 protein (Cat# [TP322989]). The protein was produced from HEK293T cells transfected with ABL2 cDNA clone (Cat# [RC222989]) using MegaTran 2.0 (Cat# [TT210002]).