

Product datasheet for PH322985

SPTLC1 (NM_006415) Human Mass Spec Standard

Product data:

Product Type:	Mass Spec Standards
Description:	SPTLC1 MS Standard C13 and N15-labeled recombinant protein (NP_006406)
Species:	Human
Expression Host:	HEK293
Expression cDNA Clone or AA Sequence:	RC222985
Predicted MW:	52.6 kDa
Protein Sequence:	>RC222985 representing NM_006415 Red=Cloning site Green=Tags(s)

MATATEQWVLVEMVQALYEAPAYHLILEGILILWIIRLLFSKTYKLQERSDLTVKEKEELIEEWQPEPLV
PPVPKDHLPALNYIVSGPPSHKTVVNGKECINFASFNGLLDNPRVKAAALASLKKYGVGTCGPRGFYG
TFDVHLDLEDRLAKFMKTEEAIISYGFATIASAIPAYSKRGDIVVDRAACFAIQKGLQASRSDIKLKF
HNDMADLERLLKEQEIEDQKNPRKARVTRRFIVVEGLYMNTGTICPLPELVKLYKYKARIFLEESLSFG
VLGEHGRGVTEHYGINIDDIDLISANMENALASIGGFCCGRSFVIDHQRLSGQGYCFASALPPLAAAAI
EALNIMEENPGIFAVLKEKCGQIHKALQGISGLKVVGESLSPAFHLQLEESTGSREQDVRLLEIIVDQCM
NRSIALTQARYLEKEEKCLPPPSIRVVVTVEQTEEELERAASTIKEVAQAVLL

TRTRPLEQKLISEEDLAANDILDYKDDDDKV

Tag:	C-Myc/DDK
Purity:	> 80% as determined by SDS-PAGE and Coomassie blue staining
Concentration:	>0.05 µg/µL as determined by microplate BCA method
Labeling Method:	Labeled with [U- ¹³ C ₆ , ¹⁵ N ₄]-L-Arginine and [U- ¹³ C ₆ , ¹⁵ N ₂]-L-Lysine
Buffer:	25 mM Tris-HCl, 100 mM glycine, pH 7.3
Storage:	Store at -80°C. Avoid repeated freeze-thaw cycles.
Stability:	Stable for 3 months from receipt of products under proper storage and handling conditions.
RefSeq:	NP_006406
RefSeq Size:	2780
RefSeq ORF:	1419
Synonyms:	HSAN1; HSN1; LBC1; LCB1; SPT1; SPTI



[View online »](#)

Locus ID: 10558

UniProt ID: [O15269](#), [A0A024R277](#), [Q6NUL7](#)

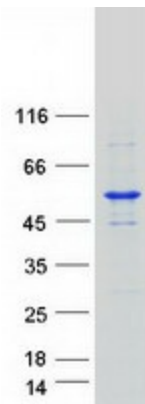
Cytogenetics: 9q22.31

Summary: This gene encodes a member of the class-II pyridoxal-phosphate-dependent aminotransferase family. The encoded protein is the long chain base subunit 1 of serine palmitoyltransferase. Serine palmitoyltransferase converts L-serine and palmitoyl-CoA to 3-oxosphinganine with pyridoxal 5'-phosphate and is the key enzyme in sphingolipid biosynthesis. Mutations in this gene were identified in patients with hereditary sensory neuropathy type 1. Alternatively spliced variants encoding different isoforms have been identified. Pseudogenes of this gene have been defined on chromosomes 1, 6, 10, and 13. [provided by RefSeq, Jul 2013]

Protein Families: Druggable Genome, Transmembrane

Protein Pathways: Metabolic pathways, Sphingolipid metabolism

Product images:



Coomassie blue staining of purified SPTLC1 protein (Cat# [TP322985]). The protein was produced from HEK293T cells transfected with SPTLC1 cDNA clone (Cat# [RC222985]) using MegaTran 2.0 (Cat# [TT210002]).