

Product datasheet for PH322932

Neurologin 4 (NLGN4X) (NM_020742) Human Mass Spec Standard

Product data:

Product Type:	Mass Spec Standards
Description:	NLGN4X MS Standard C13 and N15-labeled recombinant protein (NP_065793)
Species:	Human
Expression Host:	HEK293
Expression cDNA Clone or AA Sequence:	RC222932
Predicted MW:	91.7 kDa
Protein Sequence:	>RC222932 representing NM_020742 Red=Cloning site Green=Tags(s)

MSRPQGLLWLPPLFTPVCVMLNSNVLLWLTALAIKFTLIDSQAQYPVNTNYGKIRGLRTPNEILGPV
EQYLGVPYASPTGERRFQPPEPSSWTGIRNTTQFAAACPQHLDERSLLHDMLPIWFTANLDTLMTYVQ
DQNEDECLYLNIIYPTEDDIHQNSKKPVMVYIHGGSYMEGTGNMIDGSILASYGNVIVITINYRLGILGF
LSTGDQAAKGNYGLLDQIQALRWIEENVGAFGGDPKRVTFGSGAGASCVSLLTLSHYSEGLFQKAIQSQ
GTALSSWAVNYQPAKYTRILADKVGCMMLDTTDMVECLRNKNYKELIQQTITPATYHIAFGPVIDGDVIP
DDPQILMEQGEFLNYDIMLGVNQGEGLKFVDGIVDNEDGVTPNDFDFSVSNFVDNLGYGPEGKDTLRETI
KFMYPDWADKENPETERRTLVALFTDHQWVAPAVATADLHAQYGSPTYFYAFYHHCQSEMKPSWADSAHG
DEVPPYVFGIPMIGPTLFCNFKNDVMLSAVVMTYWTNFAKTGDPNQVPQDTKF IHTKPNRFEEVAWS
KYNPKDQLYLHIGLKPRVRDHYRATKVAFWLELVPHLHNLNEIFQYVSTTTKVPPDMSFPYGTTRSPA
KIWPTTKRPAITPANNPKHSDPHKTGPEDTTVLIETKRDYSTELESVTI AVGASLLFLNILAFAALYYKK
DKRRHETHRRPSPQRNTTNDIAHIQNEEIMSLQMKQLEHDHECESLQAHDTLRLTCPPDYTLTLRRSPDD
IPLMTPNTITMIPNTLTGMQPLHTFNTFSGGQNSTNLPHGHSTTRV

TRTRPLEQKLI SEEDLAANDILDYKDDDDKV

Tag:	C-Myc/DDK
Purity:	> 80% as determined by SDS-PAGE and Coomassie blue staining
Concentration:	>0.05 µg/µL as determined by microplate BCA method
Labeling Method:	Labeled with [U- ¹³ C ₆ , ¹⁵ N ₄]-L-Arginine and [U- ¹³ C ₆ , ¹⁵ N ₂]-L-Lysine
Buffer:	25 mM Tris-HCl, 100 mM glycine, pH 7.3
Storage:	Store at -80°C. Avoid repeated freeze-thaw cycles.
Stability:	Stable for 3 months from receipt of products under proper storage and handling conditions.
RefSeq:	NP_065793



[View online »](#)

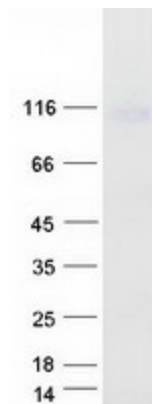
RefSeq Size:	5706
RefSeq ORF:	2448
Synonyms:	ASPGX2; AUTSX2; HLNX; HNL4X; NLGN4
Locus ID:	57502
UniProt ID:	Q8N0W4 , A0A024RBV0
Cytogenetics:	Xp22.32-p22.31

Summary: This gene encodes a member of the type-B carboxylesterase/lipase protein family. The encoded protein belongs to a family of neuronal cell surface proteins. Members of this family may act as splice site-specific ligands for beta-neurexins and may be involved in the formation and remodeling of central nervous system synapses. The encoded protein interacts with discs large homolog 4 (DLG4). Mutations in this gene have been associated with autism and Asperger syndrome. Alternative splicing results in multiple transcript variants. [provided by RefSeq, Aug 2013]

Protein Families: Druggable Genome, Transmembrane

Protein Pathways: Cell adhesion molecules (CAMs)

Product images:



Coomassie blue staining of purified NLGN4X protein (Cat# [TP322932]). The protein was produced from HEK293T cells transfected with NLGN4X cDNA clone (Cat# [RC222932]) using MegaTran 2.0 (Cat# [TT210002]).