

Product datasheet for **PH322886**

FREM1 (NM_144966) Human Mass Spec Standard

Product data:

| | |
|---------------------------------------|---|
| Product Type: | Mass Spec Standards |
| Description: | FREM1 MS Standard C13 and N15-labeled recombinant protein (NP_659403) |
| Species: | Human |
| Expression Host: | HEK293 |
| Expression cDNA Clone or AA Sequence: | RC222886 |
| Predicted MW: | 241.9 kDa |



[View online »](#)

Protein Sequence: >RC222886 representing NM_144966
 Red=Cloning site Green=Tags(s)

MNSLSWGAANAVLLLLLLAWASPTFISINRGVVRVMKGHSAFLSGDDLKFAIPKEKDACKVEVMMNEPITQ
 RVGKLTPOVFDCHFLPNEVKYVHNGCPILEDDEVKLRLYRFTERTDIETFILWVYLLEPCNIIHMSNN
 VLEVPENGLSQAIDKNLLRFDYDRMASLECTVSLDTARTRLPAGQMVLGEPREEPRGDQPHSFFPES
 QLRAKLCPCGGSCPTGLKKIGSLKVSCEEFLLMGLRYQHLDPPSPNIDYISIQDLDTDRSKIVYKSESA
 WLPVYIRAGIPNQIPKAAFMAVFILEVDQFILTSLTTSVLDCEEDETPKPLLVFNITKAPLQGYVTHLLD
 HTRPISSFTWKDLSDMQIAYQPPNSSHSERRHDEVELEVYDFFERSAPMTVHISIRTADTNAPRVSWNT
 GLSLELEGQSRAITWEQFQVVDNDDIGAVRLVTVGGLQHGWLTLRGGKGFLLTVADLQAGVVRVYHDDSDS
 TKDFVVFRIFDGHSIRHKFPINVLPKDDSPFLITNVVIELEEGQTILIQGSMLRASVDASDDYIFFN
 ITKPPQAGEIMKKPGPGLIGYPVHGFLQRDLFNGIYYRHFGGEIFEDSFQFVLWDSHEPPNLVSPQVAT
 IHITPVDQLPKEAPGVSRLVVKETEVAIYITKKQLHFIDSESYDRELVTITPPFFSFSHRHLDAKGL
 FMVDSIPKVVKNPTALELRSFTQHAVNYMKVAYMPPMQDIGPHCRDVQFTFSVSNQHGGLHGICFNITI
 LPVDNQVPEAFTNPLKVTEGGQSIISTEHLISDADTKLDNIDLRELPLHGRVELNGFPLNSGGTFSW
 GDLHTLKVRYQHDGTEVLQDDLLLEVTDGTNSAEFVLHVEVFPVNDPEPVLKADLMPVMNCSEGGVVIT
 SEYIFATDVSDNLKMFVIAREPQHGVRRAAGTVTDQFSQRDVISEAVTYKHTGGEIGLMPCFDITLV
 VSDGEAGPFVNGCCYNGPNPSVPLHASFPVYDLNITVYPVDNQPPSIAIGPVFVVEGECSTALTVNHLA
 TDPDAADDEFLVLSPPQFGYLENILELPSVGFESNIGISIDSFQWKDMNAFHINYYQSRHLRIEPTADQ
 FTVVYVTDGKHSLEIPFSIINPTNDEAPDFVQNTVCEGQMKELDSSIIISAVDLIPQDALLFSITQK
 PRHGLLIDRGFSKDFSENKQANPHQKHAPVHSFMELLKTMRLTYMHDDSESLADDFTIQLSDGKHKI
 LKTIISVEVIPVNDKPMLSKKAIEAMNGETRIISSAILSAIDEDSPREKIYYVFERLPQNGQLQKIGR
 DWVPLSPGMKCTQEEVDLNLRYTHTGAMDSQNQDSFTFYLDGNNRSPALDCQITIKDMEKGDIVILTK
 PLVYVSKGDRGFLTTTTLLAVDGTDKPEELLYVITSPPRYQIEYVHYPGVPITNFSQMDVVVGQTVCYVHK
 SKVTVSSDRFRFIISNGLRTEHGVEITLETVDRALPVVTRNKGLRLAQGAVGLLSPDLLQLTDPDPAE
 NLFTLLVQLPQHGLYLWGTGLLQHNFTQQDQVDSKNVAYRHSGGDSQTDCTFMATDGTNQGFVNGRVW
 EEPVLFITQVDQLDKTAPRITLLHSPSQVGLLKNQCYGIYITSRVLKASDPDTEDDQIIFKILQGPKHGH
 LENTTTGEFIEHKFSQKDLNSKILYIINPSLEVNSDTVEFQIMDPTGNSATPQILELKWHSIHSQTEY
 EVCENVGLLPLEIIRRGYSMDSAFVGIKVNVQVSAAVGKDFTVIPSKLIQFDPGMSTKMWNIAITYDGLLE
 DDEVFEVILNSPVNAVLGTTKAAVKILDSKGGQCHPSYSSNQSKHSTWEKGIWHLLPPGSSSSTSGSF
 HLERRPLPSSMLAVIRGDTLRGFDSTLSQRKLRTRGNGKTVRPSVYRNGTDIINYHGVVSLKLEDD
 SFPTHKRKAKVSIISQPQKTIKVAELPQADKVESTTDSHFPRQDQLPSFPKNCTLELKLGFHFEEGIQKL
 YQCNGIAWKAWSPTKDVEDKSCPAGWHQHSGYCHILITEQKGTWNAQAACREQYLGNLVTVFSRQHMR
 WLWDIGGRKSWFVIGLNDQVHAGHWEWIGGEPVAFVNGRRGPSQRSKLGKSCVLRQKQKTKDCRRAK
 HNYVCSRKL

TRTRPLEQKLISEEDLAANDILDYKDDDDKV

Tag: C-Myc/DDK

Purity: > 80% as determined by SDS-PAGE and Coomassie blue staining

Concentration: >0.05 µg/µL as determined by microplate BCA method

Labeling Method: Labeled with [U- 13C6, 15N4]-L-Arginine and [U- 13C6, 15N2]-L-Lysine

Buffer: 25 mM Tris-HCl, 100 mM glycine, pH 7.3

Storage: Store at -80°C. Avoid repeated freeze-thaw cycles.

Stability: Stable for 3 months from receipt of products under proper storage and handling conditions.

RefSeq: [NP_659403](#)

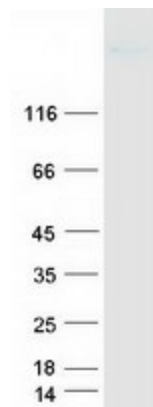
RefSeq Size: 7387

| | |
|---------------|--|
| RefSeq ORF: | 6537 |
| Synonyms: | BNAR; C9orf143; C9orf145; C9orf154; MOTA; TILRR; TRIGNO2 |
| Locus ID: | 158326 |
| UniProt ID: | Q5H8C1 |
| Cytogenetics: | 9p22.3 |

Summary: This gene encodes a basement membrane protein that may play a role in craniofacial and renal development. Mutations in this gene have been associated with bifid nose with or without anorectal and renal anomalies. Alternatively spliced transcript variants encoding different isoforms have been described. PubMed ID 19940113 describes one such variant that initiates transcription within a distinct, internal exon; the resulting shorter isoform (named Toll-like/interleukin-1 receptor regulator, TILRR) is suggested to be a co-receptor of the interleukin 1 receptor family and may regulate receptor function and Toll-like receptor/interleukin 1 receptor signal transduction, contributing to the control of inflammatory response activation. [provided by RefSeq, Apr 2011]

Protein Families: Protease, Transmembrane

Product images:



Coomassie blue staining of purified FREM1 protein (Cat# [TP322886]). The protein was produced from HEK293T cells transfected with FREM1 cDNA clone (Cat# [RC222886]) using MegaTran 2.0 (Cat# [TT210002]).