

Product datasheet for PH322864

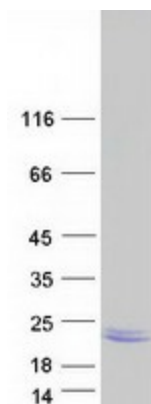
LEMD1 (NM_001001552) Human Mass Spec Standard

Product data:

Product Type:	Mass Spec Standards
Description:	LEMD1 MS Standard C13 and N15-labeled recombinant protein (NP_001001552)
Species:	Human
Expression Host:	HEK293
Expression cDNA Clone or AA Sequence:	RC222864
Predicted MW:	11.7 kDa
Protein Sequence:	>RC222864 representing NM_001001552 Red=Cloning site Green=Tags(s) MVDVKCLSDCKLQNLQLEKLGFSGPILPSTRKLYEKLVQLLVSPPCAPPVMNGPRELDGAQDSDSEGG LQEHQAPESHMGLSPKRETTARKTRLSRAGEKKVSQWA TRTRPLEQKLISEEDLAANDILDYKDDDDKV
Tag:	C-Myc/DDK
Purity:	> 80% as determined by SDS-PAGE and Coomassie blue staining
Concentration:	>0.05 µg/µL as determined by microplate BCA method
Labeling Method:	Labeled with [U- 13C6, 15N4]-L-Arginine and [U- 13C6, 15N2]-L-Lysine
Buffer:	25 mM Tris-HCl, 100 mM glycine, pH 7.3
Storage:	Store at -80°C. Avoid repeated freeze-thaw cycles.
Stability:	Stable for 3 months from receipt of products under proper storage and handling conditions.
RefSeq:	NP_001001552
RefSeq Size:	779
RefSeq ORF:	324
Synonyms:	CT50; LEMP-1
Locus ID:	93273
UniProt ID:	Q68G75
Cytogenetics:	1q32.1



[View online »](#)

Product images:

Coomassie blue staining of purified LEMD1 protein (Cat# [TP322864]). The protein was produced from HEK293T cells transfected with LEMD1 cDNA clone (Cat# [RC222864]) using MegaTran 2.0 (Cat# [TT210002]).