

Product datasheet for PH322836

TJP1 (NM_003257) Human Mass Spec Standard

Product data:

Product Type:	Mass Spec Standards
Description:	TJP1 MS Standard C13 and N15-labeled recombinant protein (NP_003248)
Species:	Human
Expression Host:	HEK293
Expression cDNA Clone or AA Sequence:	RC222836
Predicted MW:	195.3 kDa
Protein Sequence:	>RC222836 representing NM_003257 Red=Cloning site Green=Tags(s)

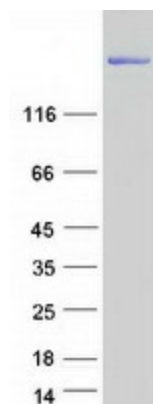
MSARAAAAKSTAMEETAWEQHTVTLHRAPGFGFGIAISGGRDNPHFQSGETSIVISDVLKGGPAEGQLQ
ENDRVAMVNGVSMNDNEHAFVAVQQLRKSGKNAKITIRKKKVQIPVSRPDPEVSDNEEDSYDEEIHDP
SGRSGVNRRESEKIWRDRSASRERSLSPRSDRRSVASSQPAKPTKVTLVKSRKNEEYGLRLASHIFVKE
ISQDSLAAARDGNIQEGDVLLKINGTVTENMSL TDAKTL IERSKGLKMMVVQRDERATLLNVPDLSDSIHS
ANASERDDISEIQSLASDHSGRSHDRPPRRSRSPDQRSEPSDHSRHSPPQPSNGLSRDEERISKPG
AVSTPVKHADDHTPKTVEEVTVERNEKQTPSLPEPKPVYAQVGGQPDVLPVSPSDGVLPNSTHEDGILRP
SMKLVKFRKGDVGLRLAGGNDVGFVAGVLEDSPAAGELEEGDQILRVNNDVFNIIREEAVLFLDL
PKGEEVTLAQKKDVRRIVESDVGDSFYIRTHFEYEKESPYGLSFKNGEVFRVVDLTYNGKLGSLWAI
RIGKNHKEVERGIIPKNRAEQLASVQYTLPKTAGGDRADFWRFRGLRSSKRNLKRSREDL SAQPVQTKF
PAYERVVLREAGFLRPVTFIFGPIADVAREKLAREEPDIYQIAKSEPRDAGTDQRSSGIIRLHTIKQIIDQ
DKHALLDVTNPAVDRLNYAQWYPIVVFLNPDQSKQGVKTMRMRLCPESRKSARKLYERSHKLKRNHHLFT
TTINLNSMNDGWYGALKEAIQQQQNQLVWVSEKADGATSDDLHDDRLSYLSAPGSEYSMYSTDSRHT
SDYEDTDEGGAYTDQELDELNDEVTGTPPESAITRSSEPVREDSSGMHHEHQTYPPYSPQAQPPIHRI
DSPGFKPASQQKAEASSVPYLSPETNPASSTSAVNHNVNL TNVRL EETPAPSTSYSPQADSLRTPSTE
AAHIMLRDQEPSLSSHVDPTKVYRKDPYPEEMMRQNHVLLKQPAVSHPGHRPDKEPNLTYPQLPYVEKQA
SRDLEQPTYRYESSYTDQF SRNYEHLRYEDRVPMYEEQWSYDDKQPYSPRPPFNQHSQDLDSRQHP
EESSERGYFRFEPPAPLSYDSRPRYEQAPRASALRHEEQPAPGYDTHGRLRPEAQPHPSAGPKPAESKQ
YFEQYSRSYEQVPPQGFTSRAGHFEPLHGAAAVPPLIPSSQHKPEALPSNTKPLPPPPTQTEEEEDPAMK
PQSVL TRVKMFENKRSASLETKKDVNDTGSFKPPEVASKPSGAPIIGPKPTSQNQFSEHDKLTYRIPEPQ
KPQLKPPEDIVRSNHYPDEEYRQKLSYFDRRSFENKPPAIIAASHLSEPAKPAHSQNQSNFSSYSS
KGGPPEADGVDRSFGKRYEPIQATPPPPPLPSQYAQPSQPVTSASLHIHSGAHGEGNSVSLDFQNSLV
SKPDPSPSQNKPATFRPPNREDAQAAYPQKSFDPKAPVNGTEQTQKTVTPAYNRFTPKPYTSSARPF
RKFESPKFNHLLPSETAHKPDLSKKTPTSPKTLVKSHSLAQPFDFSGVETFSIHAEKPKYQINNI STV
PKAIPVSPSAVEEDEDGHTTVATARGIFNSNGVLSIIETGVSIIIPQGAIEGVEQEIIYFKVCRDNS
ILPPLDKEKGETLLSPLVMCGPHGLKFLKPVLELRLPHCDPKTQWQKCLPGDPNYLVGANCVSVLIDHF

TRTRPLEQKLISEEDLAANDILDYKDDDDKV



[View online »](#)

Tag:	C-Myc/DDK
Purity:	> 80% as determined by SDS-PAGE and Coomassie blue staining
Concentration:	>0.05 µg/µL as determined by microplate BCA method
Labeling Method:	Labeled with [U- 13C6, 15N4]-L-Arginine and [U- 13C6, 15N2]-L-Lysine
Buffer:	25 mM Tris-HCl, 100 mM glycine, pH 7.3
Storage:	Store at -80°C. Avoid repeated freeze-thaw cycles.
Stability:	Stable for 3 months from receipt of products under proper storage and handling conditions.
RefSeq:	NP_003248
RefSeq Size:	7165
RefSeq ORF:	5244
Synonyms:	ZO-1
Locus ID:	7082
UniProt ID:	Q07157 , Q6MZU1
Cytogenetics:	15q13.1
Summary:	<p>This gene encodes a member of the membrane-associated guanylate kinase (MAGUK) family of proteins, and acts as a tight junction adaptor protein that also regulates adherens junctions. Tight junctions regulate the movement of ions and macromolecules between endothelial and epithelial cells. The multidomain structure of this scaffold protein, including a postsynaptic density 95/disc-large/zona occludens (PDZ) domain, a Src homology (SH3) domain, a guanylate kinase (GuK) domain and unique (U) motifs all help to co-ordinate binding of transmembrane proteins, cytosolic proteins, and F-actin, which are required for tight junction function. Alternative splicing results in multiple transcript variants encoding different isoforms. [provided by RefSeq, Aug 2017]</p>
Protein Families:	Druggable Genome
Protein Pathways:	Adherens junction, Epithelial cell signaling in Helicobacter pylori infection, Gap junction, Tight junction, Vibrio cholerae infection

Product images:

Coomassie blue staining of purified TJP1 protein (Cat# [TP322836]). The protein was produced from HEK293T cells transfected with TJP1 cDNA clone (Cat# [RC222836]) using MegaTran 2.0 (Cat# [TT210002]).