

Product datasheet for PH322831

WFDC3 (NM_080614) Human Mass Spec Standard

Product data:

Product Type:	Mass Spec Standards
Description:	WFDC3 MS Standard C13 and N15-labeled recombinant protein (NP_542181)
Species:	Human
Expression Host:	HEK293
Expression cDNA Clone or AA Sequence:	RC222831
Predicted MW:	22 kDa
Protein Sequence:	>RC222831 representing NM_080614 Red =Cloning site Green =Tags(s) MMLSCLFLLKALLALGSLESWITAGEHAKEGECPPDKNPCKELCQGDELCPAEQKCCTTGCGRICRDIPK GRKRDCPRVIRKQSKLRKITDKTCPGVKKCCTLGCNKSCVVPISKQKLAIEFGGECPADPLPCEELCDGD ASCPQGHKCCSTGCGRTCLGDIEGGRGDCPKVLVGLCIVGCVMDENCQAGEKCKSGCGRFCVPPVLP KLTMPNWTVRSDELEIPVP TRTRPLEQKLI SEEDLAANDILDYKDDDDKV
Tag:	C-Myc/DDK
Purity:	> 80% as determined by SDS-PAGE and Coomassie blue staining
Concentration:	>0.05 µg/µL as determined by microplate BCA method
Labeling Method:	Labeled with [U- 13C6, 15N4]-L-Arginine and [U- 13C6, 15N2]-L-Lysine
Buffer:	25 mM Tris-HCl, 100 mM glycine, pH 7.3
Storage:	Store at -80°C. Avoid repeated freeze-thaw cycles.
Stability:	Stable for 3 months from receipt of products under proper storage and handling conditions.
RefSeq:	NP_542181
RefSeq Size:	1000
RefSeq ORF:	693
Synonyms:	dj447F3.3; WAP14
Locus ID:	140686
UniProt ID:	Q8IUB2



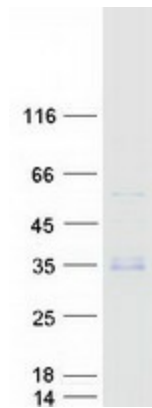
[View online »](#)

Cytogenetics: 20q13.12

Summary: This gene encodes a member of the WAP-type four-disulfide core (WFDC) domain family. The WFDC domain, or WAP signature motif, contains eight cysteines forming four disulfide bonds at the core of the protein, and functions as a protease inhibitor. The encoded protein contains four WFDC domains. Most WFDC genes are localized to chromosome 20q12-q13 in two clusters: centromeric and telomeric. This gene belongs to the telomeric cluster. Alternatively spliced transcript variants have been observed but their full-length nature has not been determined. [provided by RefSeq, Jul 2008]

Protein Families: Secreted Protein

Product images:



Coomassie blue staining of purified WFDC3 protein (Cat# [TP322831]). The protein was produced from HEK293T cells transfected with WFDC3 cDNA clone (Cat# [RC222831]) using MegaTran 2.0 (Cat# [TT210002]).