

Product datasheet for PH322829

JNK1 (MAPK8) (NM_139046) Human Mass Spec Standard

Product data:

Product Type:	Mass Spec Standards
Description:	MAPK8 MS Standard C13 and N15-labeled recombinant protein (NP_620634)
Species:	Human
Expression Host:	HEK293
Expression cDNA Clone or AA Sequence:	RC222829
Predicted MW:	43.8 kDa
Protein Sequence:	>RC222829 representing NM_139046 Red=Cloning site Green=Tags(s) MSRSKRDNFYSVEIGDSTFTVLKRYQNLKPIGSGAQGIVCAAYDAILERNVAIKKLSRPFQNTTHAKRA YRELVLMKCVNHKNIIGLLNVFPPQKSLEEFQDVYIVMELMDANLCQVIQMELDHERMSYLLYQMLCGIK HLHSAGIIHRDLKPSNIVVKS DCTLKILDFGLARTAGTSFMMTPYVVTRYRAPEVILGMGYKENVDIWS VGCIMGEMIKGGVLPFGTDHIDQWNVIEQLGTPCPEFMKKLQPTVRTYVENRPKYAGYSFEKLFDPDLVLF PADSEHNKLNKASQARDLLSKMLVIDASKRISVDEALQHPYINVWYDPSEAEAPPPKIPDKQLDEREHTIE EWKELIYKEVMDLEERTKNGVIRGQPSPLAQVQQ TRTRPLEQKLI SEEDLAANDILDYKDDDDKV
Tag:	C-Myc/DDK
Purity:	> 80% as determined by SDS-PAGE and Coomassie blue staining
Concentration:	50 ug/ml as determined by BCA
Labeling Method:	Labeled with [U- ¹³ C ₆ , ¹⁵ N ₄]-L-Arginine and [U- ¹³ C ₆ , ¹⁵ N ₂]-L-Lysine
Buffer:	100 mM glycine, 25 mM Tris-HCl, pH 7.3. Store at -80°C. Avoid repeated freeze-thaw cycles. Stable for 3 months from receipt of products under proper storage and handling conditions.
RefSeq:	NP_620634
RefSeq Size:	1417
RefSeq ORF:	1152
Synonyms:	JNK; JNK-46; JNK1; JNK1A2; JNK21B1/2; PRKM8; SAPK1; SAPK1c
Locus ID:	5599
Cytogenetics:	10q11.22



[View online »](#)

Summary:

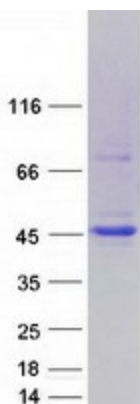
The protein encoded by this gene is a member of the MAP kinase family. MAP kinases act as an integration point for multiple biochemical signals, and are involved in a wide variety of cellular processes such as proliferation, differentiation, transcription regulation and development. This kinase is activated by various cell stimuli, and targets specific transcription factors, and thus mediates immediate-early gene expression in response to cell stimuli. The activation of this kinase by tumor-necrosis factor alpha (TNF-alpha) is found to be required for TNF-alpha induced apoptosis. This kinase is also involved in UV radiation induced apoptosis, which is thought to be related to cytochrom c-mediated cell death pathway. Studies of the mouse counterpart of this gene suggested that this kinase play a key role in T cell proliferation, apoptosis and differentiation. Several alternatively spliced transcript variants encoding distinct isoforms have been reported. [provided by RefSeq, Apr 2016]

Protein Families:

Druggable Genome, ES Cell Differentiation/IPS, Protein Kinase

Protein Pathways:

Adipocytokine signaling pathway, Colorectal cancer, Epithelial cell signaling in Helicobacter pylori infection, ErbB signaling pathway, Fc epsilon RI signaling pathway, Focal adhesion, GnRH signaling pathway, Insulin signaling pathway, MAPK signaling pathway, Neurotrophin signaling pathway, NOD-like receptor signaling pathway, Pancreatic cancer, Pathways in cancer, Progesterone-mediated oocyte maturation, RIG-I-like receptor signaling pathway, Toll-like receptor signaling pathway, Type II diabetes mellitus, Wnt signaling pathway

Product images:

Coomassie blue staining of purified MAPK8 protein (Cat# [TP322829]). The protein was produced from HEK293T cells transfected with MAPK8 cDNA clone (Cat# [RC222829]) using MegaTran 2.0 (Cat# [TT210002]).