

Product datasheet for PH322826

GPBP1 (NM_022913) Human Mass Spec Standard

Product data:

Product Type:	Mass Spec Standards
Description:	GPBP1 MS Standard C13 and N15-labeled recombinant protein (NP_075064)
Species:	Human
Expression Host:	HEK293
Expression cDNA Clone or AA Sequence:	RC222826
Predicted MW:	53.3 kDa
Protein Sequence:	>RC222826 protein sequence Red=Cloning site Green=Tags(s)

MAQHDFAPAWLNFPTPPSSTKSSLNFEKHSENF AWTENRYDVNRRRHNSSDGFDSAIGRPNGGNFGRKEK
NGWRTHGRNGTENINHRGGYHGGSSRSRSIIFHAGKSQGLHENNIPDNETGRKEDKREKQFEAEDFPSL
NPEYEREPNHKSLAAGVWEYPPNPKSRAPRMLVIKKGNTKDLQLSGFPVVGNLPSQPVKNGTGPSVYKG
LVPKPAAPPTKPTQWKSQTKENKVGTSFPHESTFGVGNFNAFKSTAKNFSPTNSVKECNRNSSSSPVDK
LNQQPRLTKLTRMRTDKKSEFLKALKRDRVEEEHEDES RAGSEKDDDSFNLHNSNSTHQERDINRNFDEN
EIPQENGNASVISQQIIRSSTFPQTDVLS SLEAEHRLKEMGWQEDSENDETCAPLTEDEMREFQVISE
QLQKNGLRKNGLKNGLICDFKFGPWKNSTFKPTTENDDTETSSSDTSDDDDV

TRTRPLEQKLI SEEDLAANDILDYKDDDDKV

Tag:	C-Myc/DDK
Purity:	> 80% as determined by SDS-PAGE and Coomassie blue staining
Concentration:	>0.05 µg/µL as determined by microplate BCA method
Labeling Method:	Labeled with [U- ¹³ C ₆ , ¹⁵ N ₄]-L-Arginine and [U- ¹³ C ₆ , ¹⁵ N ₂]-L-Lysine
Buffer:	25 mM Tris-HCl, 100 mM glycine, pH 7.3
Storage:	Store at -80°C. Avoid repeated freeze-thaw cycles.
Stability:	Stable for 3 months from receipt of products under proper storage and handling conditions.
RefSeq:	<u>NP_075064</u>
RefSeq Size:	4633
RefSeq ORF:	1419
Synonyms:	GPBP; SSH6; VASCULIN



[View online »](#)

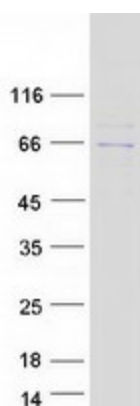
Locus ID: 65056

UniProt ID: [Q86WP2](#)

Cytogenetics: 5q11.2

Summary: This gene was originally isolated by subtractive hybridization of cDNAs expressed in atherosclerotic plaques with a thrombus, and was found to be expressed only in vascular smooth muscle cells. However, a shorter splice variant was found to be more ubiquitously expressed. This protein is suggested to play a role in the development of atherosclerosis. Studies in mice suggest that it may also function as a GC-rich promoter-specific trans-activating transcription factor. Several alternatively spliced transcript variants encoding different isoforms have been described for this gene. [provided by RefSeq, Feb 2011]

Product images:



Coomassie blue staining of purified GPBP1 protein (Cat# [TP322826]). The protein was produced from HEK293T cells transfected with GPBP1 cDNA clone (Cat# [RC222826]) using MegaTran 2.0 (Cat# [TT210002]).