

Product datasheet for PH322824

SLC25A3 (NM_005888) Human Mass Spec Standard

Product data:

Product Type:	Mass Spec Standards
Description:	SLC25A3 MS Standard C13 and N15-labeled recombinant protein (NP_005879)
Species:	Human
Expression Host:	HEK293
Expression cDNA Clone or AA Sequence:	RC222824
Predicted MW:	40.09 kDa
Protein Sequence:	>RC222824 representing NM_005888 Red=Cloning site Green=Tags(s) MFSSVAHLARANPFNTPHLQLVHDGLGDLRSSSPGPTGQPRRPNLAAAAVEEQYSCDYGSGRFFILCGL GGIISCGTTHALVPLDLVKCRMQVDPQKYKGFNGFSVTLKEDGVRGLAKGWAPTFLGYSMQGLCKFGF YEVFKVLYSNMLGEENTYLWRTSLYLAASASAEFFADIALAPMEAAKVRIQTQPGYANTLRDAAPKMYKE EGLKAFYKGVAPLWMRQIPYTMKFACFERTVEALYKFVVPKPRSECSKPEQLVVTVFAGYIAGVFCIAIV SHPADSVVSVLNKEKGSSASLVKRLGFKGVWVWGLFARIIMIGTLTALQWFYDYSVKVYFRLPRPPPEM PESLKKKLGLTQ TRTRPLEQKLI SEEDLAANDILDYKDDDDKV
Tag:	C-Myc/DDK
Purity:	> 80% as determined by SDS-PAGE and Coomassie blue staining
Concentration:	>0.05 µg/µL as determined by microplate BCA method
Labeling Method:	Labeled with [U- ¹³ C ₆ , ¹⁵ N ₄]-L-Arginine and [U- ¹³ C ₆ , ¹⁵ N ₂]-L-Lysine
Buffer:	25 mM Tris-HCl, 100 mM glycine, pH 7.3
Storage:	Store at -80°C. Avoid repeated freeze-thaw cycles.
Stability:	Stable for 3 months from receipt of products under proper storage and handling conditions.
RefSeq:	NP_005879
RefSeq Size:	1688
RefSeq ORF:	1086
Synonyms:	OK/SW-cl.48; PHC; PTP
Locus ID:	5250



[View online »](#)

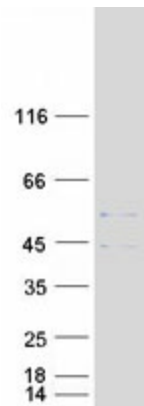
UniProt ID: [Q00325](#), [A0A024RBH9](#), [Q6MZF9](#)

Cytogenetics: 12q23.1

Summary: The protein encoded by this gene catalyzes the transport of phosphate into the mitochondrial matrix, either by proton cotransport or in exchange for hydroxyl ions. The protein contains three related segments arranged in tandem which are related to those found in other characterized members of the mitochondrial carrier family. Both the N-terminal and C-terminal regions of this protein protrude toward the cytosol. Multiple alternatively spliced transcript variants have been isolated. [provided by RefSeq, Jul 2008]

Protein Families: Transmembrane

Product images:



Coomassie blue staining of purified SLC25A3 protein (Cat# [TP322824]). The protein was produced from HEK293T cells transfected with SLC25A3 cDNA clone (Cat# [RC222824]) using MegaTran 2.0 (Cat# [TT210002]).