

Product datasheet for PH322790

CBWD1 (NM_018491) Human Mass Spec Standard

Product data:

| | |
|---------------------------------------|---|
| Product Type: | Mass Spec Standards |
| Description: | CBWD1 MS Standard C13 and N15-labeled recombinant protein (NP_060961) |
| Species: | Human |
| Expression Host: | HEK293 |
| Expression cDNA Clone or AA Sequence: | RC222790 |
| Predicted MW: | 43.9 kDa |
| Protein Sequence: | >RC222790 representing NM_018491 Red=Cloning site Green=Tags(s) |

MLPAVGSADDEEDPAEEDCPPELVPIETTQSEEEKSGLGAKIPVTIITGYLGAGKTTLLNYILTEQHSKR
VAVILNEFGGSALEKSLAVSQGGELYEEWLELRNGCLCCSVKDSGLRAIENLMQKKGFDYILLETGL
ADPGAVASMFVWDAELGSDIYLDGIITIVDSKYGLKHLTEEKPDGLINEATRQVALADAILINKTDLVPE
EDVKKLRTTIRSLGQILETQRSVDLSNVLDLHAFDSLGSISLQKKLQHVPGTQPHLDQSIVTITFE
VPGNAKEEHLNMFIQNLLWEKNVRNKDNHCMEVIRLKGKLSIKDKSQQVIVQGVHELVDLEETPVSWKDD
TERTNRLVLLGRNLDKDKILKQLFIATVTETEKQWTRFQEDQVCT

TRTRPLEQKLISEEDLAANDILDYKDDDDKV

| | |
|------------------|--|
| Tag: | C-Myc/DDK |
| Purity: | > 80% as determined by SDS-PAGE and Coomassie blue staining |
| Concentration: | >0.05 µg/µL as determined by microplate BCA method |
| Labeling Method: | Labeled with [U- ¹³ C ₆ , ¹⁵ N ₄]-L-Arginine and [U- ¹³ C ₆ , ¹⁵ N ₂]-L-Lysine |
| Buffer: | 25 mM Tris-HCl, 100 mM glycine, pH 7.3 |
| Storage: | Store at -80°C. Avoid repeated freeze-thaw cycles. |
| Stability: | Stable for 3 months from receipt of products under proper storage and handling conditions. |
| RefSeq: | NP_060961 |
| RefSeq Size: | 1680 |
| RefSeq ORF: | 1185 |
| Synonyms: | COBP |
| Locus ID: | 55871 |

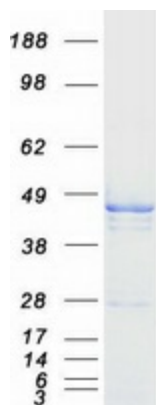


[View online »](#)

UniProt ID: Q9BRT8

Cytogenetics: 9p24.3

Product images:



Coomassie blue staining of purified CBWD1 protein (Cat# [TP322790]). The protein was produced from HEK293T cells transfected with CBWD1 cDNA clone (Cat# [RC222790]) using MegaTran 2.0 (Cat# [TT210002]).