

Product datasheet for PH322768

XPNPEP2 (NM_003399) Human Mass Spec Standard

Product data:

Product Type:	Mass Spec Standards
Description:	XPNPEP2 MS Standard C13 and N15-labeled recombinant protein (NP_003390)
Species:	Human
Expression Host:	HEK293
Expression cDNA Clone or AA Sequence:	RC222768
Predicted MW:	75.4 kDa
Protein Sequence:	>RC222768 representing NM_003399 Red=Cloning site Green=Tags(s)

MARAHWGCCPWL VLLCACAWGHTKPVDLGGQDVRNCSTNPPYLPVTVVNTTMSLTALRQQMQTQNL SAYI
IPGTD AHMNEYIGQHDERRAWITGFTGSAGTAVVTMKKAAVWTD SRYWTAERQMDCNWELHKEVGTTP I
VTWLLTEIPAGGRVGFDPFLLSIDTWESYDLALQGSNRQLVSITTNLVDL VWGSE RPPVPNPQPIYALQEA
FTGSTWQEKVSGVRSQM QKHQKVPTAVLLSALEETAWLFNL RASDIPYNPFFYSY TLLTDSSIRLFANKS
RFSSETLSYLNSSCTGPMCQVQIEDYSQVRDSIQAYSLGDVRIWIGTSYTM YGIYEMIPKEKLVTD TYSPV
MMTKAVKNSKEQALLKASHVRDAVAVIRYL VWLEKNVPKGTVDEFSGAEI VDKFRGEEQFSSG P S FETIS
ASGLNAALAHYSPTKELNRKLS SDEMYLLD SGGQYWDGTTDITR TVHWGTPSAFQKEAYTRVLIGNIDLS
RLIFPAATSGRMVEAFARRALWDAGLNYGHGTGHGIGNFLCVHEWPVGFQSN NIAMAKGMFTSIEPGYYK
DGEFGIRLEDVALVVEAKTKYPGSYLTFEVVSFVPYDRNLI DV SLLSPEHLQYLNRYYQTIREKVGPELQ
RRQLLEEFEWLQQHTEPLAARAPDTASWASVLV VSTLAILGWSV

TRTRPLEQKLI SEEDLAANDILDYKDDDDKV

Tag:	C-Myc/DDK
Purity:	> 80% as determined by SDS-PAGE and Coomassie blue staining
Concentration:	>0.05 µg/µL as determined by microplate BCA method
Labeling Method:	Labeled with [U- ¹³ C ₆ , ¹⁵ N ₄]-L-Arginine and [U- ¹³ C ₆ , ¹⁵ N ₂]-L-Lysine
Buffer:	25 mM Tris-HCl, 100 mM glycine, pH 7.3
Storage:	Store at -80°C. Avoid repeated freeze-thaw cycles.
Stability:	Stable for 3 months from receipt of products under proper storage and handling conditions.
RefSeq:	NP_003390
RefSeq Size:	3329



[View online »](#)

RefSeq ORF: 2022

Synonyms: AEACEI; APP2

Locus ID: 7512

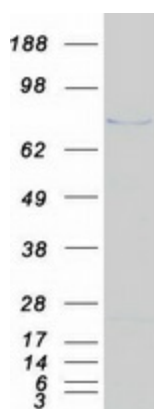
UniProt ID: [O43895](#)

Cytogenetics: Xq26.1

Summary: Aminopeptidase P is a hydrolase specific for N-terminal imido bonds, which are common to several collagen degradation products, neuropeptides, vasoactive peptides, and cytokines. Structurally, the enzyme is a member of the 'pita bread fold' family and occurs in mammalian tissues in both soluble and GPI-anchored membrane-bound forms. A membrane-bound and soluble form of this enzyme have been identified as products of two separate genes. [provided by RefSeq, Jul 2008]

Protein Families: Druggable Genome, Protease

Product images:



Coomassie blue staining of purified XPNPEP2 protein (Cat# [TP322768]). The protein was produced from HEK293T cells transfected with XPNPEP2 cDNA clone (Cat# [RC222768]) using MegaTran 2.0 (Cat# [TT210002]).