

Product datasheet for PH322740

CARD11 (NM_032415) Human Mass Spec Standard

Product data:

Product Type:	Mass Spec Standards
Description:	CARD11 MS Standard C13 and N15-labeled recombinant protein (NP_115791)
Species:	Human
Expression Host:	HEK293
Expression cDNA Clone or AA Sequence:	RC222740
Predicted MW:	133.3 kDa
Protein Sequence:	>Peptide sequence encoded by RC222740 Blue=ORF Red=Cloning site Green=Tag(s)

MPGGGPEMDDYMETLKDEEDALWENVECNRHMLSRYPINPAKLTPYLQCKVIDEQDEDEVLNAPMLPSK
INRAGRLLDILHTKGQRGYVVFLESLEFYYPELYKLVTKGKEPTRRFSTIVVEEGHEGLTHFLMNEVIKL
QQQMKAKDLQRCELLARLRQLEDEKKQMTLTRVELLTFQERYKMKKEERDSYNDELVKVKDDNYNLAMR
YAQLSEEKNMAVMRSRDLQLEIDQLKHLNKMEECKLERNQSLKLNKNDIENRPKKEQVLELERENEML
KTKNQELQSI IQAGKRSLPDSKAILDILEHDRKEALEDQELVNRIYNLQEEARQAEELRDKYLEEKE
DLELKCSTL GKDCEMYKHRMNTVMLQLEEVERERDQAFHSRDEAQTQYSQCLIEKD KYRQIRELEEK
DEMRIEMVRREACIVNLESKLRLSKDSNNLDQSLPRNLPVTIISQDFGDASPRNGQEADDSSTSEES
PEDSKYFLPYHPPQRRMNLKGIQLQRAKSPI SLKRTSDFQAKGHEEEGTDASPSSCGSLPITNSFTKMQ
PPRSRSSIMSITAEPPGNDIVRRYKEDAPHRSTVEEDNDSGGFDALDLDDDSHERYSFGPSSIHSSSS
SHQSEGLDAYDLEQVNL MFRKFSLEPRFRPSVTSVGHVVRGPGPSVQHTTLNGDSLTSQLTLLGGNARG
FVHSVKPGSLAEKAGLREGHQLLLLLEG CIRGERQSVPLDTCTKEEAHWIQRCSGPVTLHYKVNHEGYR
KLVKDMEDGLITSGDSFYIRLNLNISSQLDACTMSLKCDVHVHVRDTPMYQDRHEWL CARVDPFDHDL
MGTIPSY SRAQQLLVKLQRLMHRGSREEVDGTHHTLRALRNTLQPEEALSTSDPRVSPRLSRASFLFG
QLLQFVSRSENKYKRMNSNERVRIISGSPLGSLARSSLDATKLLTEKQEELDPESELGKNLSLIPYSLV
RAFYCERRRPVLFPTVLAKTLVQRLN SGGAMEFTICKSDIVTRDEFLLRRQKTE TIIYSREKNPNAFC
CIAPANIEA VAAKNKHCLLEAGIGCTRDLIKSN IYPIVLFIRVCEKNIKRFRKLLPRPETEEEF LRVC
LKEKELEALPCLYATVEPDMWGSVEELLRVVKDKIGEEQRKTIWVDEDDQL
SGPTRTRPLEQKLI SEEDLAANDILDYKDDDDKV

Recombinant protein using RC222740 also available, [TP322740](#)

Tag:	C-Myc/DDK
Purity:	> 80% as determined by SDS-PAGE and Coomassie blue staining
Concentration:	>0.05 µg/µL as determined by microplate BCA method
Labeling Method:	Labeled with [U- ¹³ C ₆ , ¹⁵ N ₄]-L-Arginine and [U- ¹³ C ₆ , ¹⁵ N ₂]-L-Lysine



[View online »](#)

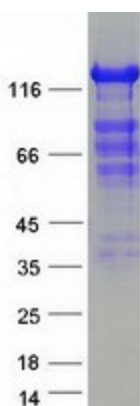
Buffer:	25 mM Tris-HCl, 100 mM glycine, pH 7.3
Storage:	Store at -80°C. Avoid repeated freeze-thaw cycles.
Stability:	Stable for 3 months from receipt of products under proper storage and handling conditions.
RefSeq:	NP_115791
RefSeq Size:	4372
RefSeq ORF:	3462
Synonyms:	BENTA; BIMP3; CARMA1; IMD11; IMD11A; PPBL
Locus ID:	84433
UniProt ID:	Q9BXL7 , A0A024R854 , Q8TES3
Cytogenetics:	7p22.2

Summary: The protein encoded by this gene belongs to the membrane-associated guanylate kinase (MAGUK) family, a class of proteins that functions as molecular scaffolds for the assembly of multiprotein complexes at specialized regions of the plasma membrane. This protein is also a member of the CARD protein family, which is defined by carrying a characteristic caspase-associated recruitment domain (CARD). This protein has a domain structure similar to that of CARD14 protein. The CARD domains of both proteins have been shown to specifically interact with BCL10, a protein known to function as a positive regulator of cell apoptosis and NF-kappaB activation. When expressed in cells, this protein activated NF-kappaB and induced the phosphorylation of BCL10. [provided by RefSeq, Jul 2008]

Protein Families: Druggable Genome

Protein Pathways: B cell receptor signaling pathway, T cell receptor signaling pathway

Product images:



Coomassie blue staining of purified CARD11 protein (Cat# [TP322740]). The protein was produced from HEK293T cells transfected with CARD11 cDNA clone (Cat# [RC222740]) using MegaTran 2.0 (Cat# [TT210002]).