

Product datasheet for PH322724

CELF2 (NM_001083591) Human Mass Spec Standard

Product data:

Product Type:	Mass Spec Standards
Description:	CELF2 MS Standard C13 and N15-labeled recombinant protein (NP_001077060)
Species:	Human
Expression Host:	HEK293
Expression cDNA Clone or AA Sequence:	RC222724
Predicted MW:	51.9 kDa
Protein Sequence:	>RC222724 representing NM_001083591 Red=Cloning site Green=Tags(s)

MNGALDHSQDPDPAIKMFVQIPRSWSEKELKELFEPYGAVYQINVLDRDRSQNPPQSKGCCFVTFYTRK
AALEAQNALHNIKTLPGMHPIQMKPADSEKSNAVEDRKLFIGMVSKKCNENDIRVMFSPFGQIEECRIL
RGPDLGSRGCAFVTFSTRAMAQNAIKAMHQSQTMEGCSSPIVVKFADTQKDKERRLQQQLAQMQQLNT
ATWGNLTGLGGLTPQYLALLQQTSSSNLGAFGSIQQMAGMNALQLQNLATLAAAAAAQTSATSTNANP
LSTTSSALGALTSPVAASTPNSTAGAAMNSLTSGLTQGLAGATVGLNNINALAGTINSMALNGGLGAT
GLTNGTAGTMDALTQAYSIGIQYAAAAALPTLYSLSLQQQSAAGSQKEGPEGANLFYHLPQEFQDQDIL
QMFMPFGNVISAKVFIDKQTNLSKCFGFVSYDNPVSAQAAIQAMNGFQIGMKRLKVQLKRSKNDSKPY

TRTRPLEQKLISEEDLAANDILDYKDDDDKV

Tag:	C-Myc/DDK
Purity:	> 80% as determined by SDS-PAGE and Coomassie blue staining
Concentration:	>0.05 µg/µL as determined by microplate BCA method
Labeling Method:	Labeled with [U- ¹³ C ₆ , ¹⁵ N ₄]-L-Arginine and [U- ¹³ C ₆ , ¹⁵ N ₂]-L-Lysine
Buffer:	25 mM Tris-HCl, 100 mM glycine, pH 7.3
Storage:	Store at -80°C. Avoid repeated freeze-thaw cycles.
Stability:	Stable for 3 months from receipt of products under proper storage and handling conditions.
RefSeq:	<u>NP_001077060</u>
RefSeq Size:	8053
RefSeq ORF:	1464
Synonyms:	BRUNOL3; CELF-2; CUG-BP2; CUGBP2; ETR-3; ETR3; NAPOR



[View online »](#)

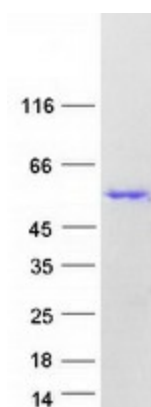
Locus ID: 10659

UniProt ID: [O95319](#)

Cytogenetics: 10p14

Summary: Members of the CELF/BRUNOL protein family contain two N-terminal RNA recognition motif (RRM) domains, one C-terminal RRM domain, and a divergent segment of 160-230 aa between the second and third RRM domains. Members of this protein family regulate pre-mRNA alternative splicing and may also be involved in mRNA editing, and translation. Alternative splicing results in multiple transcript variants encoding different isoforms. [provided by RefSeq, Jul 2008]

Product images:



Coomassie blue staining of purified CELF2 protein (Cat# [TP322724]). The protein was produced from HEK293T cells transfected with CELF2 cDNA clone (Cat# [RC222724]) using MegaTran 2.0 (Cat# [TT210002]).