

Product datasheet for PH322696

Glucose Transporter GLUT1 (SLC2A1) (NM_006516) Human Mass Spec Standard

Product data:

Product Type:	Mass Spec Standards
Description:	SLC2A1 MS Standard C13 and N15-labeled recombinant protein (NP_006507)
Species:	Human
Expression Host:	HEK293
Expression cDNA Clone or AA Sequence:	RC222696
Predicted MW:	53.9 kDa
Protein Sequence:	>RC222696 representing NM_006516 Red=Cloning site Green=Tags(s)

MEPSSKLTGRLMLAVGGAVLGSLQFGYNTGVINAPQKVIEEFYNQTWVHRYGESILPTTLTTLWLSVA
IFSVMIGSFSVGLFVNRFGRNSMLMMNLLAFVSAVLMGFSKLGKSFEMILILGRFIIGVYCGLTGTFV
PMYVGEVSPTALRGALGTLHQLGIVVGIILIAQVFLDSIMGNKDLWPLLSIIFIPALLQCIVLPFCPES
PRFLLINRNEENRAKSVLKKLRGTADVTHDLQEMKEESRQMMREKKVTILELFRSPAYRQPILIAVVLQL
SQQLSGINAVFYYSTSIFEKAGVQPVYATIGSGIVNTAFTVVSLFVVERAGRRTLHLIGLAGMAGCAIL
MTIALALLEQLPWMSYLSIVAIFGFVAFFEVGPGPIPWFIVAELFSQGPRPAAIIVAGFSNWTSNFIVGM
CFQYVEQLCGPYVFIIFTVLLVLFIFTYFKVPETKGRTFDEIASGFRQGGASQSDKTPEELFHPLGADS
QV

TRTRPLEQKLISEEDLAANDILDYKDDDDKV

Tag:	C-Myc/DDK
Purity:	> 80% as determined by SDS-PAGE and Coomassie blue staining
Concentration:	>0.05 µg/µL as determined by microplate BCA method
Labeling Method:	Labeled with [U- ¹³ C ₆ , ¹⁵ N ₄]-L-Arginine and [U- ¹³ C ₆ , ¹⁵ N ₂]-L-Lysine
Buffer:	25 mM Tris-HCl, 100 mM glycine, pH 7.3
Storage:	Store at -80°C. Avoid repeated freeze-thaw cycles.
Stability:	Stable for 3 months from receipt of products under proper storage and handling conditions.
RefSeq:	NP_006507
RefSeq Size:	2856
RefSeq ORF:	1476



[View online »](#)

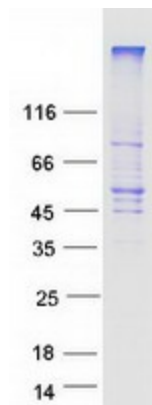
Synonyms: CSE; DYT9; DYT17; DYT18; EIG12; GLUT; GLUT-1; GLUT1; GLUT1DS; HTLVR; PED; SDCHCN
Locus ID: 6513
UniProt ID: [P11166](#), [Q59GX2](#)
Cytogenetics: 1p34.2

Summary: This gene encodes a major glucose transporter in the mammalian blood-brain barrier. The encoded protein is found primarily in the cell membrane and on the cell surface, where it can also function as a receptor for human T-cell leukemia virus (HTLV) I and II. Mutations in this gene have been found in a family with paroxysmal exertion-induced dyskinesia. [provided by RefSeq, Apr 2013]

Protein Families: Druggable Genome, ES Cell Differentiation/IPS, Transmembrane

Protein Pathways: Adipocytokine signaling pathway, Pathways in cancer, Renal cell carcinoma

Product images:



Coomassie blue staining of purified SLC2A1 protein (Cat# [TP322696]). The protein was produced from HEK293T cells transfected with SLC2A1 cDNA clone (Cat# [RC222696]) using MegaTran 2.0 (Cat# [TT210002]).