

## Product datasheet for PH322689

### MACROD2 (NM\_080676) Human Mass Spec Standard

#### Product data:

Product Type:	Mass Spec Standards
Description:	MACROD2 MS Standard C13 and N15-labeled recombinant protein (NP_542407)
Species:	Human
Expression Host:	HEK293
Expression cDNA Clone or AA Sequence:	RC222689
Predicted MW:	47.2 kDa
Protein Sequence:	>RC222689 representing NM_080676 Red=Cloning site Green=Tags(s)

MYPSNKKKKVWREEKERLLKMTLEERRKEYLRDYIPLNSILSWKEEMKGGQNDENTQETSQVKKSLTE  
KVSLYRGDITLLEVDIVNAANASLLGGGGVDGCIHRAAGPCLLAECRNNGCDTGHAKITCGYDLPAKY  
VIHTVGP IARGHINGSHKEDLANCYKSSLKLVKENNIRSVAFPCI STGIYGFNP EAAVIALNTIKEWLA  
KNHHEVDRIIFCVFLEVDFKIYKKMNEFFSVDDNNEEEEDVEMKEDSDENGPEEKQSVEEMEEQSQDAD  
GVNTVTVPGPASEEAVEDCKDEDFAKDENITKGGEVTDHSVRDQDHPDGGQENDSTKNEIKIETESQSSYM  
ETEELSSNQEDAVIVEQPEVIPLTEDQEEKEGEKAPGEDTPRMPGKSEGSSDLENTPGPDAGAQDEAKEQ  
RNGTK

TRTRPLEQKLI SEEDLAANDILDYKDDDDKV

Tag:	C-Myc/DDK
Purity:	> 80% as determined by SDS-PAGE and Coomassie blue staining
Concentration:	>0.05 µg/µL as determined by microplate BCA method
Labeling Method:	Labeled with [U- 13C6, 15N4]-L-Arginine and [U- 13C6, 15N2]-L-Lysine
Buffer:	25 mM Tris-HCl, 100 mM glycine, pH 7.3
Storage:	Store at -80°C. Avoid repeated freeze-thaw cycles.
Stability:	Stable for 3 months from receipt of products under proper storage and handling conditions.
RefSeq:	<u><a href="#">NP_542407</a></u>
RefSeq Size:	4863
RefSeq ORF:	1275
Synonyms:	C2orf133; C20orf133



[View online »](#)

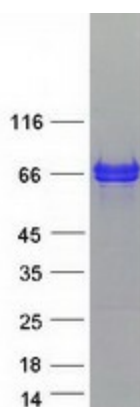
Locus ID: 140733

UniProt ID: [A1Z1Q3](#)

Cytogenetics: 20p12.1

Summary: The protein encoded by this gene is a deacetylase involved in removing ADP-ribose from mono-ADP-ribosylated proteins. The encoded protein has been shown to translocate from the nucleus to the cytoplasm upon DNA damage. [provided by RefSeq, May 2017]

### Product images:



Coomassie blue staining of purified MACROD2 protein (Cat# [TP322689]). The protein was produced from HEK293T cells transfected with MACROD2 cDNA clone (Cat# [RC222689]) using MegaTran 2.0 (Cat# [TT210002]).